
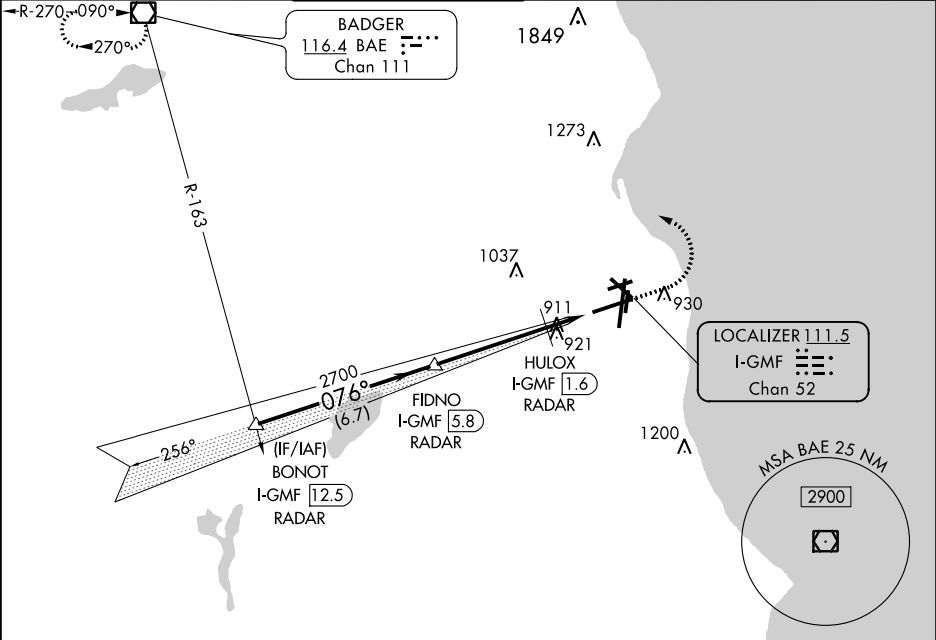


LOC/DME I-GMF 111.5 Chan 52	APP CRS 076°	Rwy Idg 8012 TDZE 729 Apt Elev 729
---	------------------------	---

ILS or LOC RWY 7R

GENERAL MITCHELL INTL (MKE)

RADAR required for procedure entry. DME or RADAR required.			<div>MALSR</div> <div></div>	MISSED APPROACH: Climb to 2900 then left turn direct BAE VOR/DME and hold.	
# RVR 1800 authorized with use of FD or AP or HUD to DA.					
D-ATIS 126.4	MILWAUKEE APP CON 126.5 307.0	MILWAUKEE TOWER 124.575 269.05	GND CON 121.8 263.125	CLNC DEL 120.8	CPDLC



BONOT I-GMF 12.5 RADAR		VGSI and ILS glidepath not coincident (VGSI Angle 3.00/TCH 63).		2900	BAE
FIDNO I-GMF 5.8 RADAR		HULOX I-GMF 1.6 RADAR		* I-GMF 1	
2900		2700		* I-GMF DME ANTENNA	
GS 3.00° TCH 50		076°		* LOC only.	
6.7 NM		4.2 NM		0.6 NM	
1.2 NM		1.2 NM		1.2 NM	
CATEGORY	A	B	C	D	
S-ILS 7R #	929/24		200 (200-½)		
S-LOC 7R	1180/24 451 (500-½)		1180/45 451 (500-¾)		
CIRCLING	1240-1 511 (600-1)		1240-1½ 511 (600-½) 1360-2 631 (700-2)		

