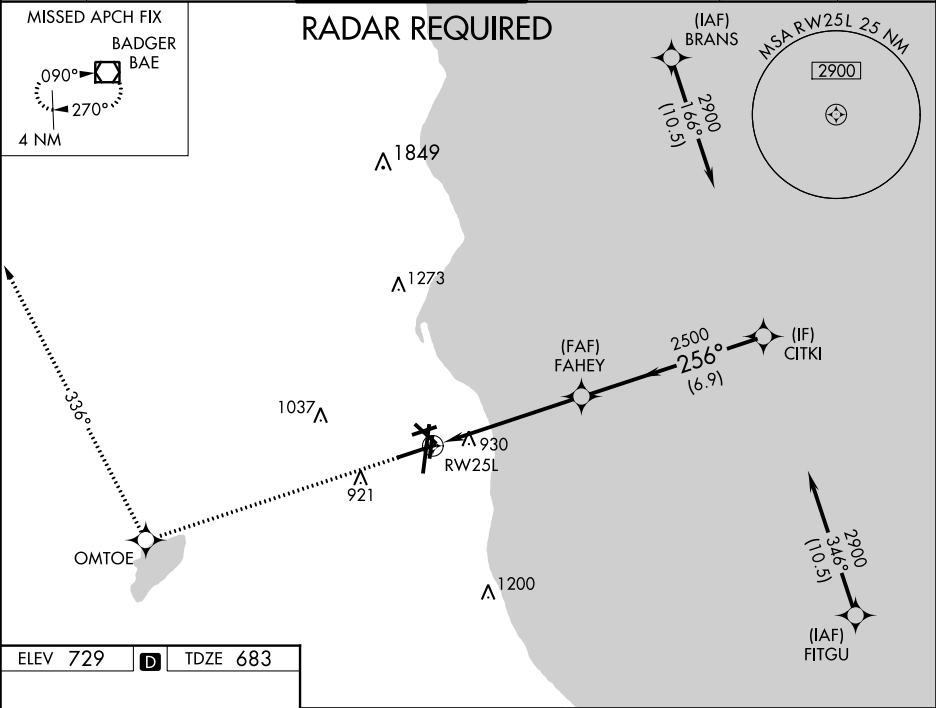


WAAS CH 62826 W25A	APP CRS 256°	Rwy Idg TDZE 683 Apt Elev 729
--	------------------------	---

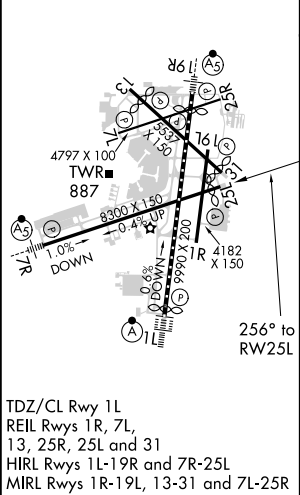
RNAV (GPS) Z RWY 25L

GENERAL MITCHELL INTL (MKE)

⚠ For uncompensated Baro-VNAV systems, LNAV/VNAV NA below -20°C (-4°F) or above 54°C (130°F). DME/DME RNP-0.3 NA. Helicopter visibility reduction below ¾ SM NA.			MISSED APPROACH: Climb to 2900 direct OMTOE and on track 336° to BAE VOR/DME and hold.		
D-ATIS 126.4	MILWAUKEE APP CON 126.5 307.0	MILWAUKEE TOWER 124.575 269.05	GND CON 121.8 263.125	CLNC DEL 120.8	CPDLC



ELEV 729	D	TDZE 683
----------	----------	----------



2900	OMTOE	tr 336°	BAE	* LNAV only	CITKI
GP 3.00° TCH 47					
CATEGORY	A	B	C	D	
LPV DA	973-1		290 (300-1)		
LNAV/ VNAV DA	1262-2		579 (600-2)		
LNAV MDA	1180-1	497 (500-1)	1180-1½	497 (500-1½)	
CIRCLING	1240-1	511 (600-1)	1240-1½ 511 (600-1½)	1360-2 631 (700-2)	