

WAAS CH <b>61123</b> <b>W09A</b>	APP CRS <b>090°</b>	Rwy Idg TDZE <b>587</b> Apt Elev <b>590</b>
--	------------------------	---

RNAV (GPS) RWY 9

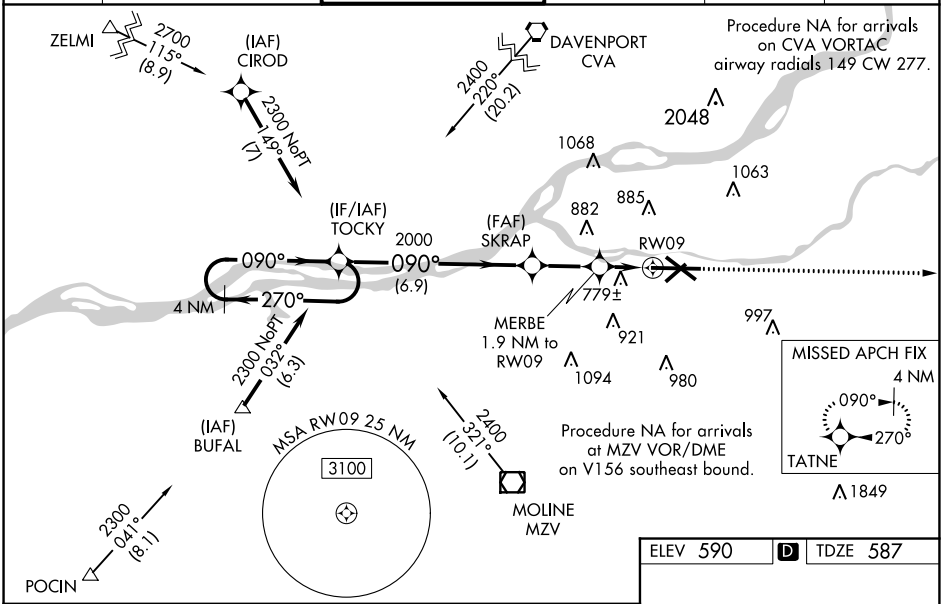
QUAD CITY INTL (MLI)

**⚠** Circling to Rwy 5 NA at night. Baro-VNAV NA when using Davenport altimeter setting. For uncompensated Baro-VNAV systems, LNAV/VNAV NA below -26°C (-14°F) or above 40°C (104°F). DME/DME RNP-0.3 NA. VDP NA when using Davenport altimeter setting. When local altimeter setting not received, use Davenport altimeter setting and increase LPV DA to 825 feet and LNAV/VNAV DA to 1160 feet and LNAV/VNAV visibility all Cats ½ SM; increase all MDA 60 feet and LNAV visibility Cats C and D ½ SM, Circling Cats C and D ¼ SM. For inoperative ALS, increase LNAV visibility Cats C and D to 1 ½ SM. When using Davenport altimeter increase LNAV/VNAV visibility all Cats to 2 SM, LNAV visibility Cats C and D to 1 ½ SM.  
\*\* RVR 1800 authorized with use of FD or AP or HUD to DA.

MALSRR

**MISSED APPROACH:**  
Climb to 2500 direct TATNE and hold.

ATIS <b>121.2</b>	QUAD CITY APP CON ★ <b>125.95 257.8</b>	QUAD CITY TOWER ★ <b>119.4 (CTAF) 0 269.55</b>	GND CON <b>121.9</b>	CLNC DEL <b>124.05</b>	UNICOM <b>122.95</b>
----------------------	--	---	-------------------------	---------------------------	-------------------------



4 NM Holding Pattern		TOCKY	SKRAP	MERBE	2500	TATNE
2300 ← 270° 090° →			2000	1.9 NM to RW09	↑	✦
GP 3.00° TCH 50°			2000	*1.4 NM to RW09	*LNAV only	
		6.9 NM	2.4 NM	0.5	1.4 NM	
CATEGORY	A	B	C	D		
LPV DA **	787/24 200 (200-½)					
LNAV/ VNAV DA	1122-1⅓ 535 (600-1⅓)					
LNAV MDA	1060/24	473 (500-½)	1060/50	473 (500-1)		
CIRCLING	1140-1 550 (600-1)	1160-1 570 (600-1)	1160-1½ 570 (600-1½)	1260-2 670 (700-2)		

