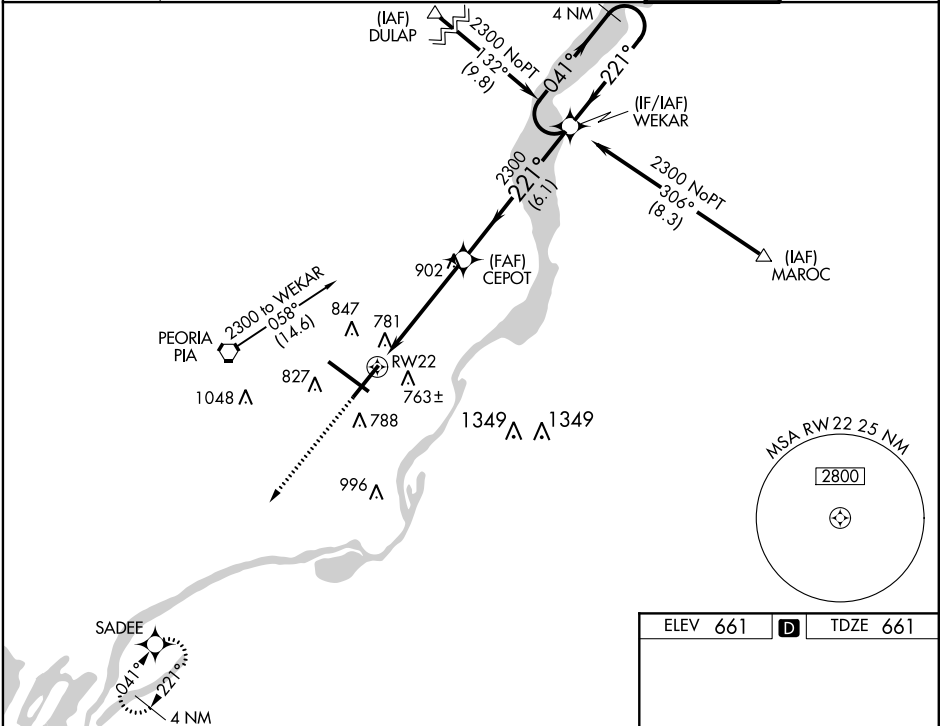




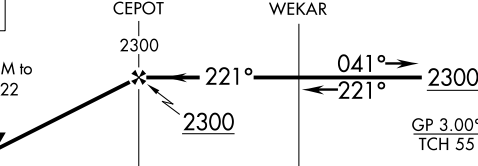
APP CRS	Rwy Idg	8004
221°	TDZE	661
	Apt Elev	661

RNAV (GPS) RWY 22
GENERAL DOWNING-PEORIA INTL (PIA)

RNP APCH.	For uncompensated Baro-VNAV systems, LNAV/VNAV NA below -19°C or above 54°C. When local altimeter setting not received, use Logan County altimeter setting and increase all DA 89 feet and all MDA 100 feet, increase LNAV/VNAV DA all Cats visibility to 1½ mile, LNAV MDA Cat C and D visibility to 1¾ mile, and Circling Cat C ¾ mile and Cat D ½ mile. Baro-VNAV and VDP NA when using Logan County altimeter setting. Rwy 22 helicopter visibility reduction below ¾ SM NA. Circling Rwy 13, 31 NA at night.	MISSED APPROACH: Climb to 2700 direct SADEE and hold.
-----------	-------------------------------------------------------------------------------------------------------------------------------------------------------------------------------------------------------------------------------------------------------------------------------------------------------------------------------------------------------------------------------------------------------------------------------------------------------------------------------------------------------------------	----------------------------------------------------------

ATIS	PEORIA APP CON	PEORIA TOWER	GND CON
126.1 282.2	125.8 269.2 (305°-125°) 124.675 317.55 (126°-304°)	124.0 353.85	121.85 348.6



2700 ↑	SADEE 	VGSI and RNAV glidepath not coincident (VGSI Angle 3.00/TCH 45).	4 NM Holding Pattern	
*LNAV only		CEPOT 2300	WEKAR	
	*1.4 NM to RW22 			
		GP 3.00° TCH 55		
	1.4	3.5 NM	6.1 NM	
CATEGORY	A	B	C	D
LNAV/ VNAV DA	1093-1 ³ / ₈ 432 (500-1 ³ / ₈)			
LNAV MDA	1160-1 499 (500-1)		1160-1 ³ / ₈ 499 (500-1 ³ / ₈)	
C CIRCLING	1160-1 499 (500-1)		1180-1 ¹ / ₂ 519 (600-1 ¹ / ₂)	1400-2 ¹ / ₄ 739 (800-2 ¹ / ₄)

