

WAAS
CH **77509**
W31A

APP CRS
309°

Rwy Idg **10104**
TDZE **650**
Apt Elev **661**

RNAV (GPS) RWY 31

GENERAL DOWNING-PEORIA INTL (PIA)

RNP APCH.
For uncompensated Baro-VNAV systems, LNAV/VNAV NA below -19°C or above 54°C.
For inoperative MALS, increase LPV all Cats visibility to 4500. When local altimeter setting not received, use Logan County altimeter setting and increase all DA 89 feet and all MDA 100 feet, increase LPV DA all Cats visibility to RVR 3500, LNAV/VNAV DA all Cats visibility to 1½ mile, LNAV MDA Cat C and D visibility to RVR 5000, and Circling Cat C ¼ mile and Cat D ½ mile.
Baro-VNAV and VDP NA when using Logan County altimeter setting.
Circling Rwy 13, 31 NA at night.

MALS
AS

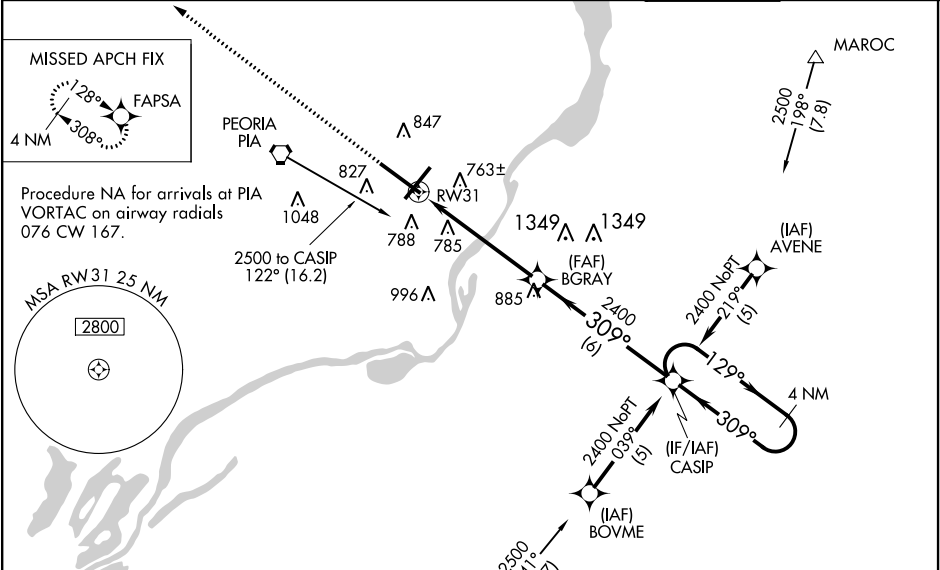
MISSED APPROACH:
Climb to 2500 direct FAPSA and hold.

ATIS
126.1 282.2

PEORIA APP CON
(305°-125°) **124.675 317.55**(126°-304°)

PEORIA TOWER
124.0 353.85

GND CON
121.85 348.6



ELEV 661 D TDZE 650

HIRL Rwy 4-22 and 13-31

2500
↑
FAPSA

*LNAV only
RW31
*1.1 NM to RW31
1.1
4.2 NM
6 NM
BGRAY
2400
CASIP
4 NM Holding Pattern
309°
129°
2400
GP 3.00°
TCH 55

CATEGORY	A	B	C	D
LPV DA	939/24 289 (300-½)			
LNAV/VNAV DA	1122/60 472 (500-1¼)			
LNAV MDA	1040/24 390 (400-½)	1040/35 390 (400-¾)		
CIRCLING	1160-1 499 (500-1)	1180-1½ 519 (600-1½)	1400-2¼ 739 (800-2¼)	