

WAAS CH 56210 W04A	APP CRS 041°	Rwy Idg TDZE Apt Elev	7826 652 661
--	------------------------	-----------------------------	---

RNAV (GPS) RWY 4
GENERAL DOWNING-PEORIA INTL (PIA)

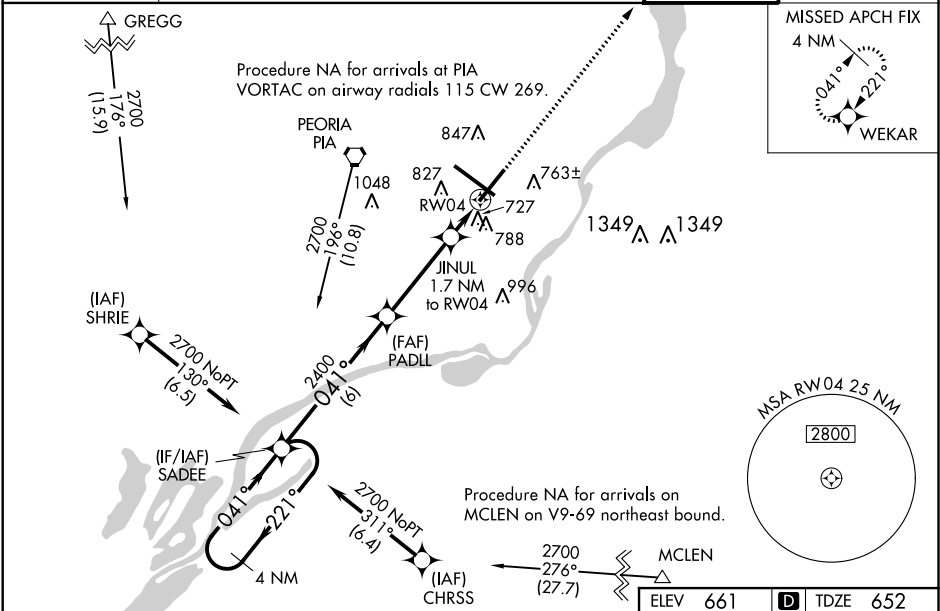
RNP APCH.

⚠ For uncompensated Baro-VNAV systems, LNAV/VNAV NA below -19°C or above 54°C. VDP and Baro-VNAV NA with Logan County altimeter setting. When local altimeter setting not received, use Logan County altimeter setting and increase all DA 89 feet and all MDA 100 feet, increase LNAV/VNAV all Cats visibility 1/8 mile, LNAV Cat C and D visibility 1/4 mile, and Circling Cat C 1/4 mile and Cat D 1/2 mile. For inoperative MALSR using Logan County altimeter setting, increase LPV all Cats visibility to 1 mile. For inop ALS, increase LNAV Cat C/D visibility to 1 SM. Circling Rwy 13, 31 NA at night.

MALSR

MISSED APPROACH:
Climb to 2300 direct WEKAR and hold.

ATIS 126.1 282.2	PEORIA APP CON 125.8 269.2 (305°-125°)	124.675 317.55 (126°-304°)	PEORIA TOWER 124.0 353.85	GND CON 121.85 348.6
----------------------------	--	-----------------------------------	--	---------------------------------------



4 NM Holding Pattern

SADEE

GP 3.00° TCH 55

2700 ← 221°

041° →

041°

2400

PADLL

JINUL 1.7 NM to RW04

*1220

*0.9 NM to RW04

RW04

2300 WEKAR

*LNAV only

CATEGORY	A	B	C	D
LPV DA	857-1/2		205 (200-1/2)	
LNAV/VNAV DA	905-1/2		253 (300-1/2)	
LNAV MDA	1000-1/2 348 (400-1/2)		1000-5/8 348 (400-5/8)	
C CIRCLING	1160-1 499 (500-1)		1180-1 1/2 519 (600-1/2) 1400-2 1/4 739 (800-2 1/4)	

ELEV 661 **D** **TDZE 652**

HIRL Rwy 4-22 and 13-31

EC-3, 03 DEC 2020 to 31 DEC 2020

EC-3, 03 DEC 2020 to 31 DEC 2020