

WAAS CH 82038 W18A	APP CRS 180°	Rwy Idg 5298 TDZE 680 Apt Elev 682
--	------------------------	---

RNAV (GPS) RWY 18

DECATUR (DEC)

RNP APCH

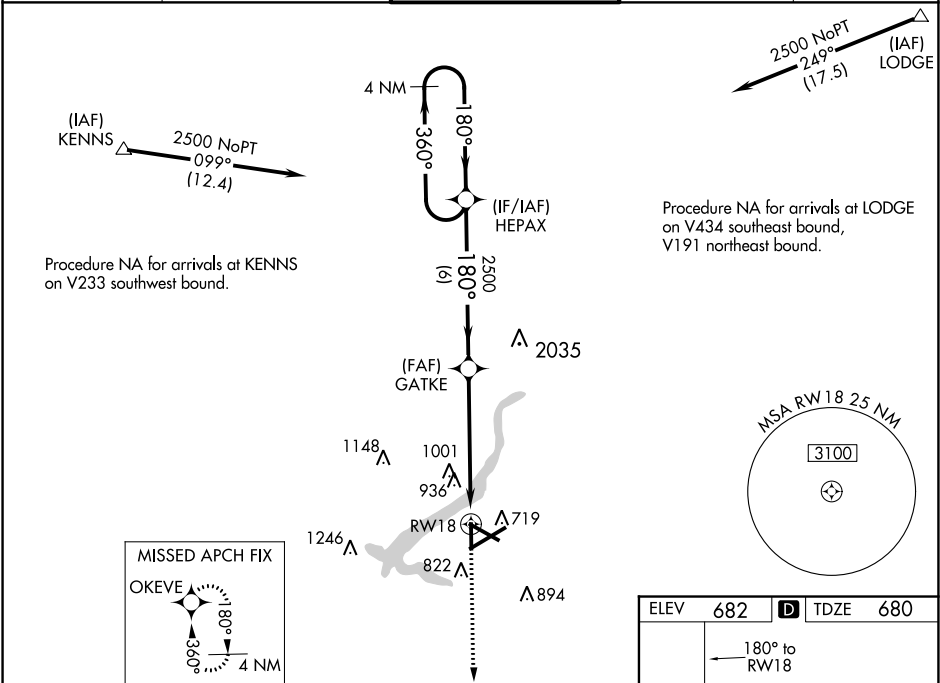
▼

▲

For uncompensated Baro-VNAV systems, LNAV/VNAV NA below -19°C or above 54°C. Baro-VNAV and VDP NA when using Logan County altimeter setting. Rwy 18 helicopter visibility reduction below ¾ SM NA. When local altimeter setting not received, use Logan County altimeter setting: Increase LPV DA to 1032 feet and visibility all Cats ¼ mile, LNAV/VNAV DA to 1326 feet and visibility all Cats ½ mile; increase all MDA 80 feet and LNAV visibility Cats C/D ½ mile, Circling Cat C/D visibility ¼ mile.

MISSED APPROACH:
Climb to 2300 direct OKEVE and hold.

ATIS 126.35	CHAMPAIGN APP CON ★ 132.85 290.225	DECATUR TOWER ★ 118.9 (CTAF) 291.775	GND CON 121.75 291.775	UNICOM 122.95
-----------------------	--	--	----------------------------------	-------------------------



4 NM Holding Pattern		*LNAV only.		2300	OKEVE
HEPAX		GATKE		2500	
2500 ← 360°		180° → 2500		*1.6 NM to RWY18	
GP 3.00°		TCH 54		RWY18	
6 NM		4 NM		1.6 NM	
CATEGORY	A	B	C	D	
LPV DA		952-7/8	272 (300-7/8)		
LNAV/VNAV DA		1246-17/8	566 (600-17/8)		
LNAV MDA	1240-1	560 (600-1)	1240-15/8	560 (600-15/8)	
CIRCLING	1240-1	558 (600-1)	1360-2	1360-2¼	
			678 (700-2)	678 (700-2¼)	

