

WAAS CH 86207 W06A	APP CRS 060°	Rwy Idg 8496 TDZE 677 Apt Elev 682
----------------------------------------	------------------------	---------------------------------------------------------------

RNAV (GPS) RWY 6

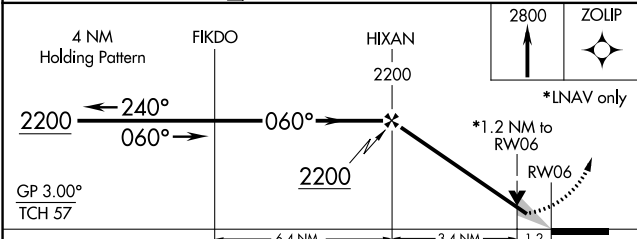
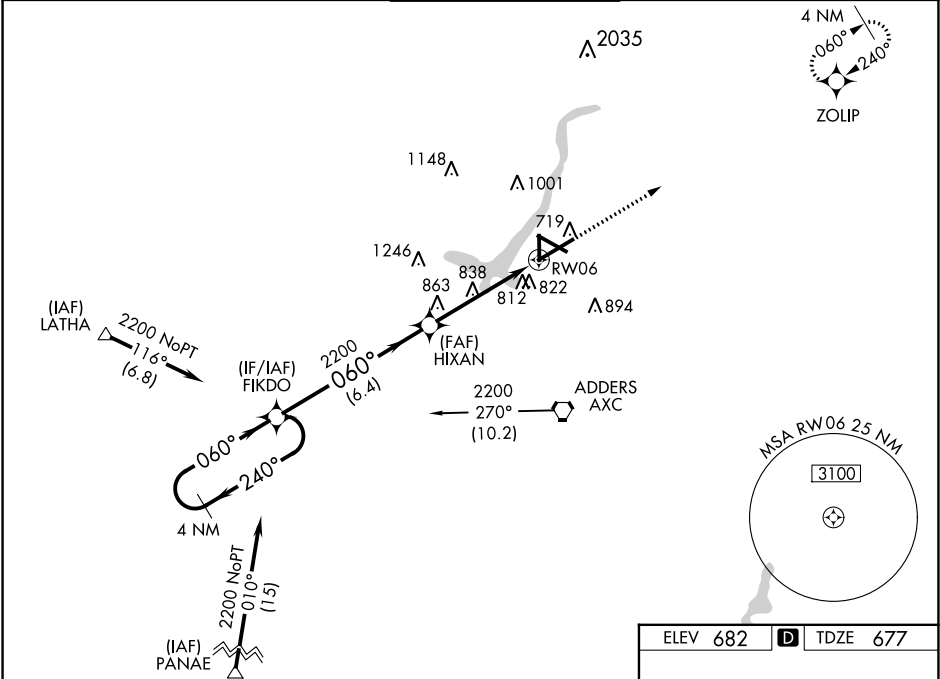
DECATUR (DEC)

⚠ For inoperative MALSR, increase LPV all Cats visibility to RVR 5000 and LNAV Cat D visibility to RVR 6000. For uncompensated Baro-VNAV systems, LNAV/VNAV NA below -16°C (4°F) or above 47°C (116°F). DME/DME RNP-0.3 NA. Baro-VNAV and VDP NA when using Logan County altimeter setting. When local altimeter setting not received, use Logan County altimeter setting and increase all DA/MDA 80 feet, increase all Cats LPV and LNAV/VNAV visibility ¼ mile. Increase LNAV Cat C and Circling Cats C/D visibility ¼ mile. For inoperative MALSR when using Logan County altimeter setting increase LPV visibility to 1¼ mile. Circling to Rwy 12 NA at night.



MISSED APPROACH:
Climb to 2800 direct ZOLIP and hold.

ATIS 126.35	CHAMPAIGN APP CON* 132.85 290.225	DECATUR TOWER* 118.9(CTAF) 291.775	GND CON 121.75 291.775	UNICOM 122.95
-----------------------	---------------------------------------------	----------------------------------------------	----------------------------------	-------------------------



CATEGORY	A	B	C	D
LPV DA	951/24 274 (300-1½)			
LNAV/VNAV DA	1101/50 424 (500-1)			
LNAV MDA	1100/24	423 (500-½)	1100/40 423 (500-¾)	1100/50 423 (500-1)
CIRCLING	1200-1 518 (600-1)	1240-1 558 (600-1)	1360-2 678 (700-2)	1360-2¼ 678 (700-2¼)

