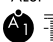
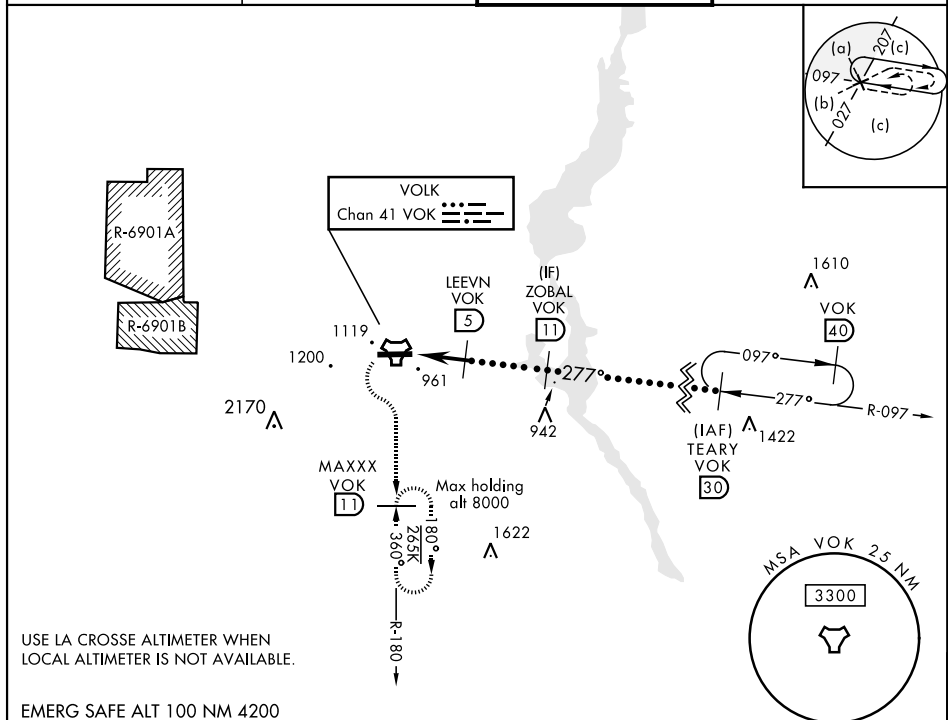


TACAN VOK Chan <b>41</b>	APCH CRS <b>277°</b>	Rwy Idg THRE Arpt Elev <b>9000</b> <b>904</b> <b>912</b>	JAL-714 [USAF]	VOLK FIELD (KVOK)
<b>V</b> * When ALS inop, increase vis to 1½ miles. ** Circling not authorized South of Rwy 9-27. *** When ALS inop, increase vis to 1¾ miles.			ALSF-1 	MISSED APPROACH: Climbing left turn to 3000 intercept VOK TACAN R-180 to MAXXX and hold.

ATIS <b>134.35 257.85</b>	VOLK APP CON <b>135.25 244.875</b>	VOLK TOWER ★ <b>127.5 0</b> (CTAF) <b>239.25 0</b>	GND CON <b>121.9 275.8</b>
------------------------------	---------------------------------------	---	-------------------------------



3000

VOK

R-180

MAXXX

VOK

11

TACAN

EEDEE

1.5

LEEVN

5

ZOBAL

11

TEARY

30

FL180

2700

2200

277°

2.94°

TCH 53

5

3.5 NM

CATEGORY	C	D	E
S-27 *	1360/45 456 (500-7%)		
CIRCLING **	1500-1½ 588 (600-1½)	1500-2 588 (600-2)	1580-2¼ 668 (700-2¼)
LA CROSSE ALTIMETER SETTING MINIMUMS			
S-27 ***	1500- 1¼ 596 (600-1¼)		
CIRCLING **	1640-2 728 (800-2)	1640-2¼ 728 (800-2¼)	1720-2¾ 808 (900-2¾)

