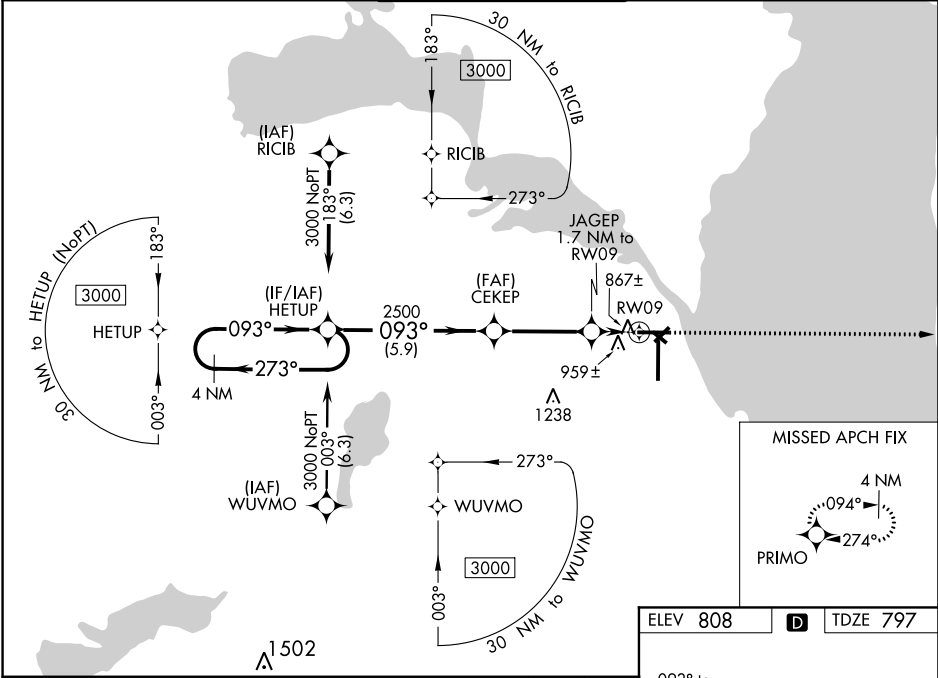


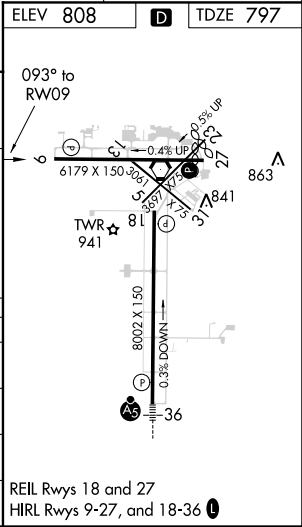
WAAS CH 86734 W09A	APP CRS 093°	Rwy Idg TDZE 797 Apt Elev 808
----------------------------------------	------------------------	---------------------------------------------------

RNAV (GPS) RWY 9
WITTMAN RGNL (OSH)

RNP APCH.				MISSED APPROACH: Climb to 3000 direct PRIMO and hold.	
▼ VDP and Baro-VNAV NA with using Fond Du Lac County altimeter setting. When local altimeter setting not received, use Fond Du Lac altimeter setting and increase all DA 31 feet and all MDA 40 feet; increase LPV and LNAV/VNAV all Cats visibility and LNAV Cats C/D visibility 1/8 mile, increase Circling Cat D visibility 1/4 mile. Circling Rwy 5, 23, 31 NA at night. Rwy 9 helicopter visibility reduction below 3/4 SM NA. For uncompensated Baro-VNAV systems, LNAV/VNAV NA below -20° C or above 54° C.					
ATIS 125.9	MILWAUKEE APP CON 127.0 263.075	OSHKOSH TOWER ★ 118.5(CTAF) 290.9	GND CON 132.3	UNICOM 122.95	



4 NM Holding Pattern HETUP		VGSI and RNAV glidepath not coincident (VGSI Angle 3.00/TCH 50).		3000	PRIMO
GP 3.00° TCH 50		CEKEP	JAGEP	*LNAV only.	
2500		2500	1.7 NM to RWY 09	*1.2 NM to RWY 09	
5.9 NM		3.5 NM	0.5	1.2 NM	
CATEGORY	A	B	C	D	
LPV DA	1055-3/4		258 (300-3/4)		
LNAV/VNAV DA	1140-1 1/8		343 (400-1 1/8)		
LNAV MDA	1220-1	423 (500-1)	1220-1 1/4	423 (500-1 1/4)	
CIRCLING	1280-1 472 (500-1)	1300-1 492 (500-1)	1360-1 1/2 552 (600-1 1/2)	1440-2 632 (700-2)	



EC-3, 03 DEC 2020 to 31 DEC 2020

EC-3, 03 DEC 2020 to 31 DEC 2020