

VORTAC OSH

116.75

Chan 114 (Y)

APP CRS

265°

Rwy Idg

5648

TDZE

786

Apt Elev

808

VOR RWY 27

WITTMAN RGNL (OSH)

▼

▲

Circling to Rwy 5, 23, and 31 NA at night. When local altimeter setting not received, use Fond Du Lac altimeter setting and increase all MDA 40 feet; increase S-27 Cats C and D visibility ¼ mile and Circling Cat C visibility ½ mile, and Cat D ¼ mile. VDP NA with Fond Du Lac altimeter setting. Helicopter visibility reduction below ¾ SM NA.

MISSED APPROACH: Climb to 3000 on OSH VORTAC R-270 to GRATE INT/OSH 8.7 DME and hold.

ATIS

125.9

MILWAUKEE APP CON

127.0 263.075

OSHKOSH TOWER ★

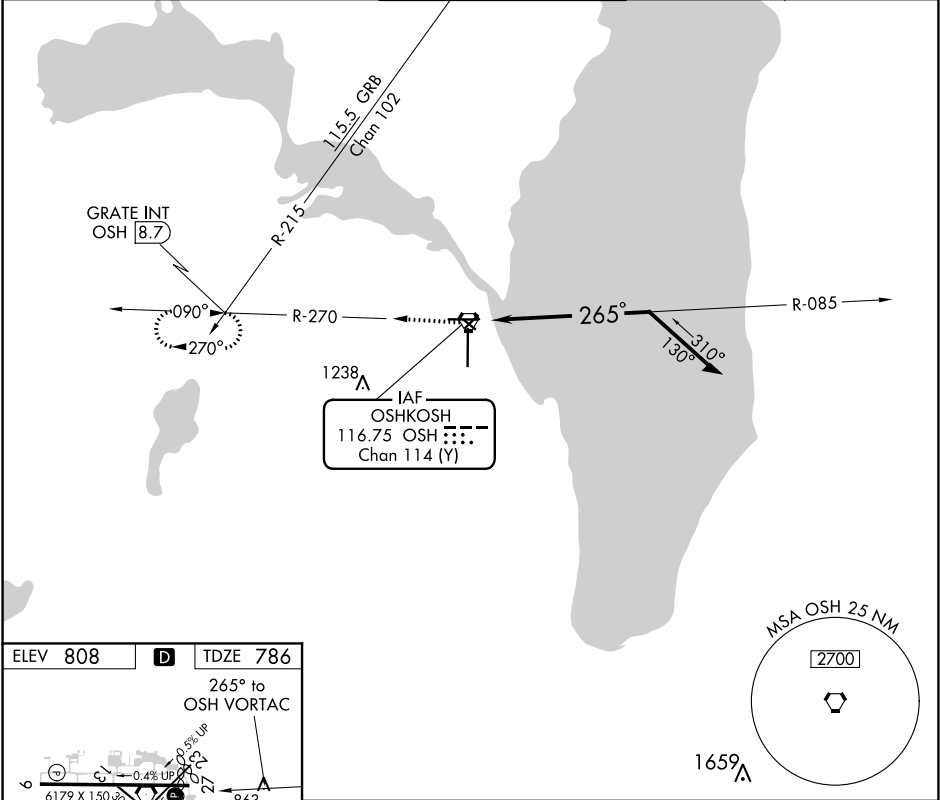
118.5 (CTAF) 290.9

GND CON

132.3

UNICOM

122.95



ELEV 808

D

TDZE 786

265° to OSH VORTAC

6179 X 150 100' 0.4% UP

863

841

81

8002 X 150 0.3% DOWN

36

REIL Rwy 18 and 27

HIRL Rwy 9-27 and 18-36

3000

OSH R-270

GRATE INT

OSH VORTAC

OSH 1.7

085°

2600

265°

1.4

Remain within 10 NM

CATEGORY	A	B	C	D
S-27	1280-1	494 (500-1)	1280-1⅓ 494 (500-1⅓)	
CIRCLING	1280-1 472 (500-1)	1300-1 492 (500-1)	1360-1½ 552 (600-1½)	1440-2 632 (700-2)

EC-3, 03 DEC 2020 to 31 DEC 2020

EC-3, 03 DEC 2020 to 31 DEC 2020