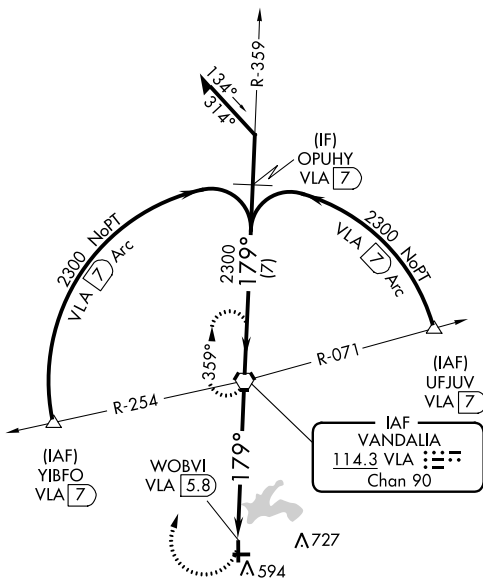


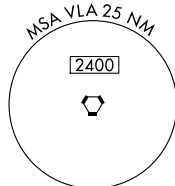
VOR RWY 18  
VANDALIA MUNI (VLA)

**MISSED APPROACH:** Climbing right turn to 2300 direct VLA VORTAC and hold.

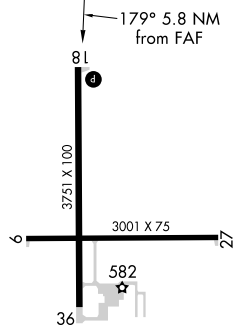
AWOS-A <b>122.8</b>	SLO AWOS-3 <b>118.525</b>	KANSAS CITY CENTER <b>124.3 269.15</b>	UNICOM <b>122.8 (CTAF) 0</b>
------------------------	------------------------------	---	---------------------------------

 $\Delta_{1307}$ 

Δ 1020



ELEV 537	TDZE 534
----------	----------



REIL Rwy 18, 27 and 36 **L**  
MIRL Rwy 9-27 and 18-36 **L**

FAF to MAP 5.8 NM					
Knots	60	90	120	150	180
Min:Sec	5:48	3:52	2:54	2:19	1:56

[illegible]