

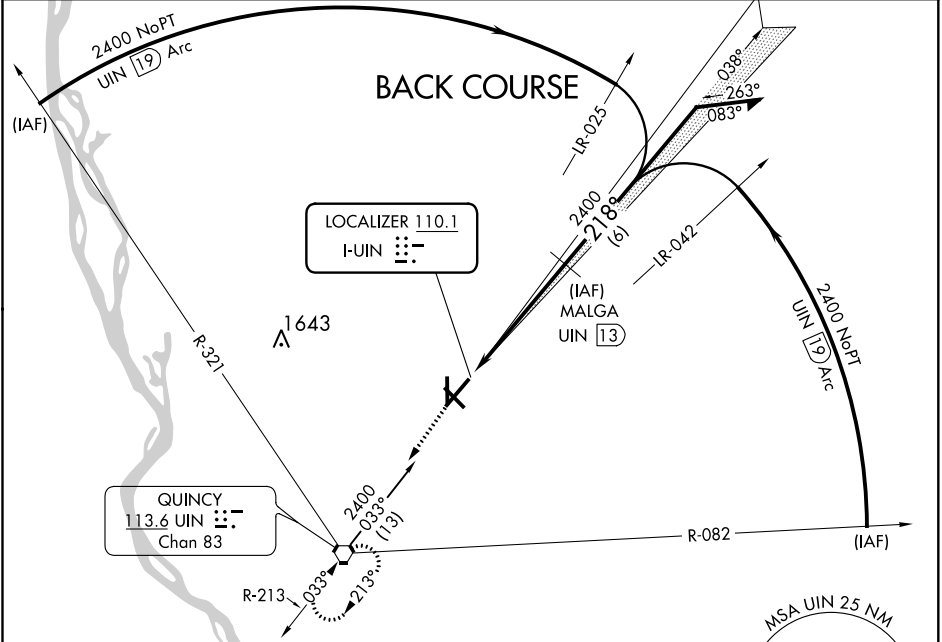
LOC I- UIN 110.1	APP CRS 218°	Rwy Idg TDZE Apt Elev	7098 749 769
-----------------------------------	------------------------	-----------------------------	---

LOC/DME BC RWY 22
QUINCY RGNL-BALDWIN FIELD (UIN)

Simultaneous reception of I-UIN and UIN DME Required.
DME from UIN VORTAC.

MISSED APPROACH: Climb to 2400
direct UIN VORTAC and hold.

ASOS 121.425	KANSAS CITY CENTER 126.225 317.775	UNICOM 123.0 (CTAF) 0
------------------------	--	--



ELEV 769 **D** TDZE 749

218° 5.4 NM from FAF

81 36 45 820 3

REIL Rws 18 and 22 **0**
HIRL Rwy 4-22 **0**
MIRL Rws 13-31 and 18-36 **0**

2400	UIN	MALGA UIN 13	038°	2400	218°	2400	Remain within 10 NM
2400	UIN 8.3	2400	038°	2400	218°	2400	Disregard glide slope indications
0.7	4.7 NM						
CATEGORY	A	B	C	D			
S-22	1140-1	391 (400-1)	1140-1¼	391 (400-1¼)			
CIRCLING	1200-1 431 (500-1)	1220-1 451 (500-1)	1220-1½ 451 (500-1½)	1320-2 551 (600-2)			