

WAAS CH 45705 W22A	APP CRS 218°	Rwy Idg TDZE 749 Apt Elev 768
--	------------------------	---

RNAV (GPS) RWY 22

QUINCY RGNL-BALDWIN FIELD (UIN)

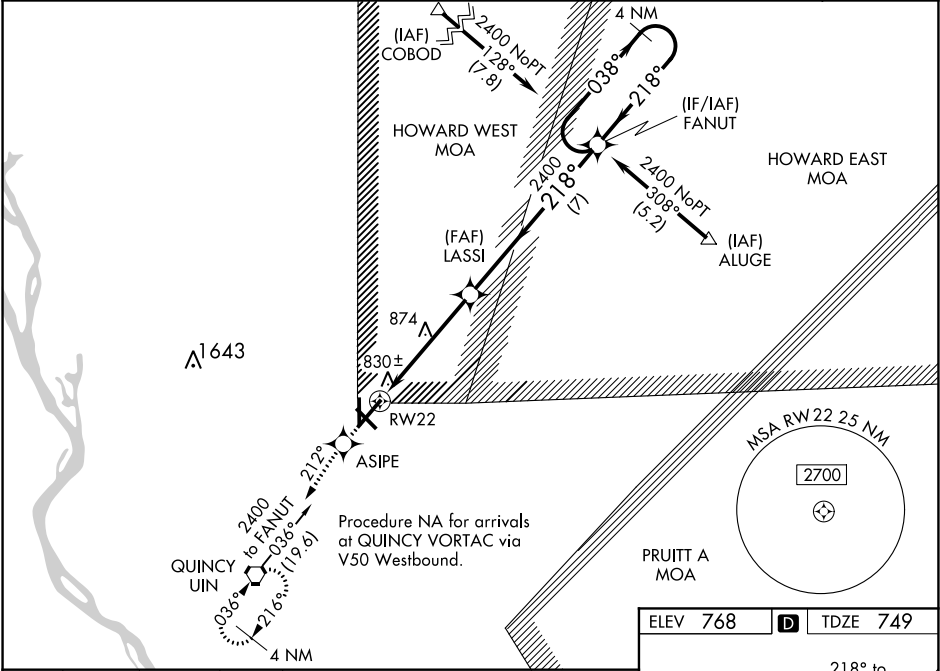
▼

▲

Baro-VNAV NA when using Pittsfield altimeter setting. For uncompensated Baro-VNAV systems, procedure NA below -16° C (4° F) or above 47° C (116° F). DME/DME RNP-0.3 NA. VDP NA when using Pittsfield altimeter setting. If local altimeter setting not received, use Pittsfield altimeter setting and increase all DAs 70 feet and all MDAs 80 feet.

MISSED APPROACH: Climb to 2400 direct ASIZE and via 212° track to UIN VORTAC and hold.

ASOS 121.425	KANSAS CITY CENTER 126.225 317.775	UNICOM 123.0 (CTAF) 0
------------------------	--	---------------------------------



2400 ↑	ASIZE 	tr 212°	UIN 		
<p>* RNAV only</p> <p>LASSI</p> <p>FANUT</p> <p>4 NM Holding Pattern</p> <p>* 1.1 NM to RW22</p> <p>RW22</p> <p>218°</p> <p>038°</p> <p>2400</p> <p>GP 3.00° TCH 43</p> <p>1.1 NM</p> <p>3.9 NM</p> <p>7 NM</p>					
CATEGORY	A		B	C	D
LPV DA	999-1 250 (300-1)				
RNAV/VNAV DA	1161-1½ 412 (400-1½)				
RNAV MDA	1140-1 391 (400-1)				1140-1½ 391 (400-1½)
CIRCLING	1200-1 432 (500-1)	1220-1 452 (500-1)	1220-1½ 452 (500-1½)	1320-2 552 (600-2)	

ELEV 768 D TDZE 749

REIL Rwy 18 and 22 0
HIRL Rwy 4-22 0
MIRL Rwy 13-31 and 18-36 0