

WAAS CH 97610 W36A	APP CRS 357°	Rwy Idg TDZE 759 Apt Elev 769	5400
--	------------------------	---	-------------

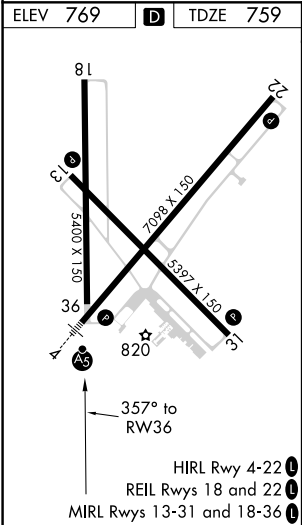
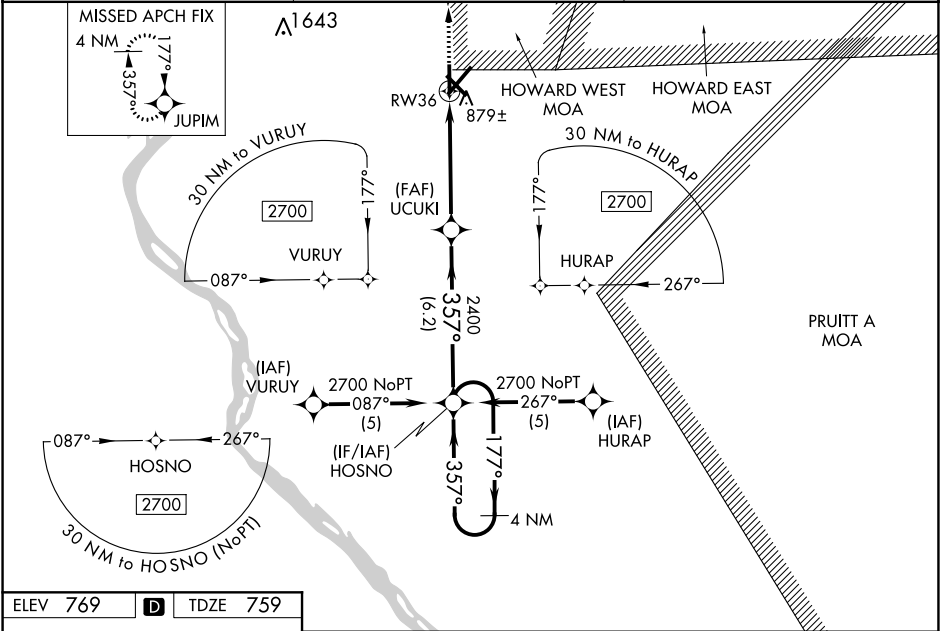
RNAV (GPS) RWY 36



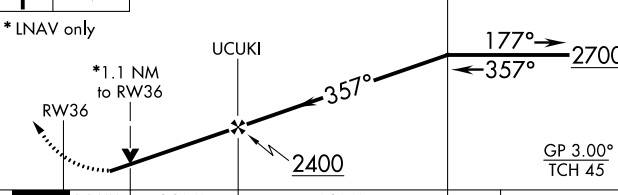
QUINCY RGNL-BALDWIN FIELD (UIN)

For uncompensated Baro-VNAV systems, LNAV/VNAV NA below -16° C (4° F) or above 47° C (116° F). DME/DME RNP-0.3 NA. Visibility reduction by helicopters NA. When local altimeter setting not received, use Pittsfield altimeter setting and increase all DA 70 feet and all MDA 80 feet. Increase LPV and LNAV/VNAV visibility all Cats. ¼ mile. Increase LNAV visibility Cat. C, D ¼ mile. VDP and Baro-VNAV NA when using Pittsfield altimeter setting.

MISSED APPROACH:
Climb to 2700 direct JUPIM and hold.

ASOS 121.425	KANSAS CITY CENTER 126.225 317.775	UNICOM 123.0 (CTAF) 0
------------------------	--	---------------------------------



2700	JUPIM				
					
* LNAV only					
					
CATEGORY	A	B	C	D	
LPV DA	1073-1 314 (400-1)				
LNAV/ VNAV DA	1181-1½ 422 (500-1½)				
LNAV MDA	1140-1 381 (400-1)			1140-1¼ 381 (400-1¼)	
CIRCLING	1180-1 411 (500-1)	1220-1 451 (500-1)	1220-1½ 451 (500-1½)	1320-2 551 (600-2)	

EC-3, 03 DEC 2020 to 31 DEC 2020

EC-3, 03 DEC 2020 to 31 DEC 2020