

WAAS CH 53510 W04A	APP CRS 038°	Rwy Idg 7098 TDZE 760 Apt Elev 769
--	------------------------	---

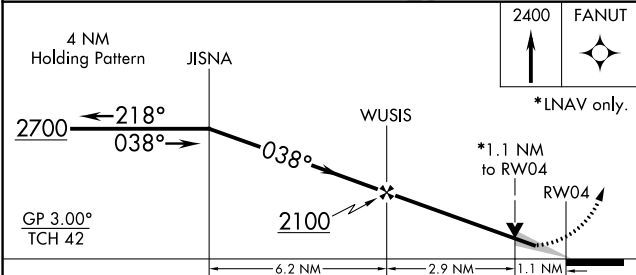
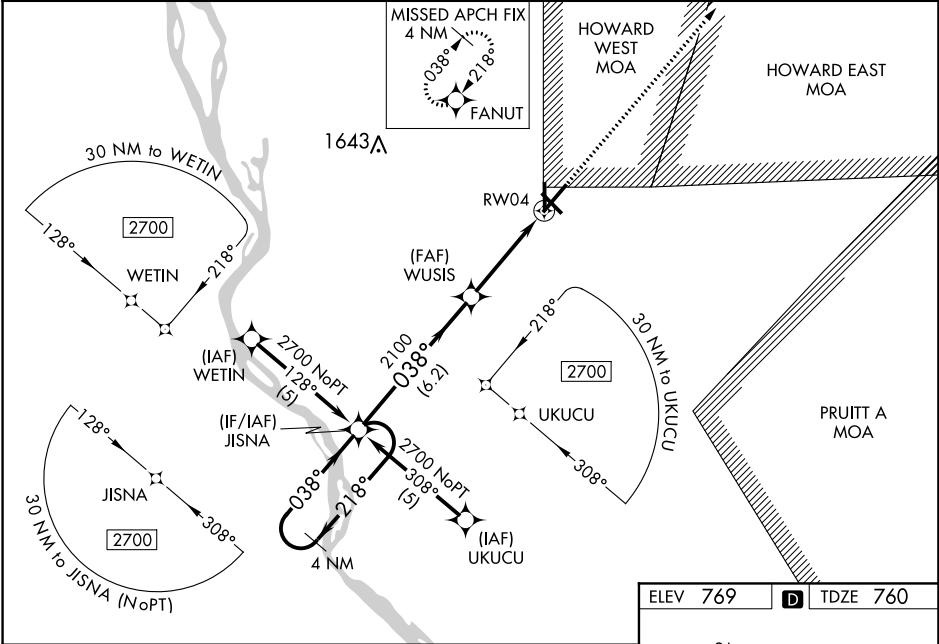
RNAV (GPS) RWY 4
QUINCY RGNL-BALDWIN FIELD (UIN)

For uncompensated Baro-VNAV systems, LNAV/VNAV NA below -16° C (4° F) or above 47° C (116° F). DME/DME RNP-0.3 NA. For inoperative MALSR increase LNAV Cat. D visibility to 1¼ miles. When local altimeter setting not received, use Pittsfield altimeter setting and increase all DA 70 feet and all MDA 80 feet. Increase LNAV/VNAV visibility all Cats. ¼ mile and LNAV Cat. C ¼ mile. For inoperative MALSR when using Pittsfield altimeter setting, increase LPV visibility all Cats. to 1 mile. VDP and Baro-VNAV NA when using Pittsfield altimeter setting.



MISSED APPROACH:
Climb to 2400 direct
FANUT and hold

ASOS 121.425	KANSAS CITY CENTER 126.225 317.775	UNICOM 123.0 (CTAF) 1
------------------------	--	---------------------------------



CATEGORY	A	B	C	D
LPV DA		960-1/2	200 (200-1/2)	
LNAV/VNAV DA		1139-3/4	379 (400-3/4)	
LNAV MDA		1160-1/2	400 (400-1/2)	1160-1 400 (400-1)
CIRCLING	1180-1 411 (500-1)	1220-1 451 (500-1)	1220-1 1/2 451 (500-1 1/2)	1320-2 551 (600-2)

