


WAAS CH 63015 W06A	APP CRS 062°	Rwy Idg 7699 TDZE 692 Apt Elev 695
--	------------------------	---

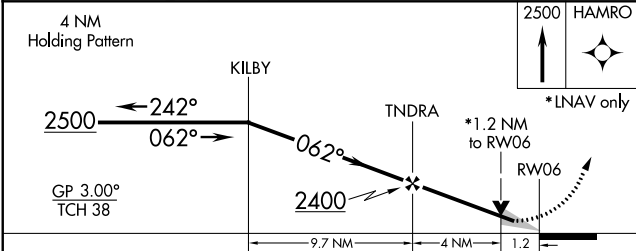
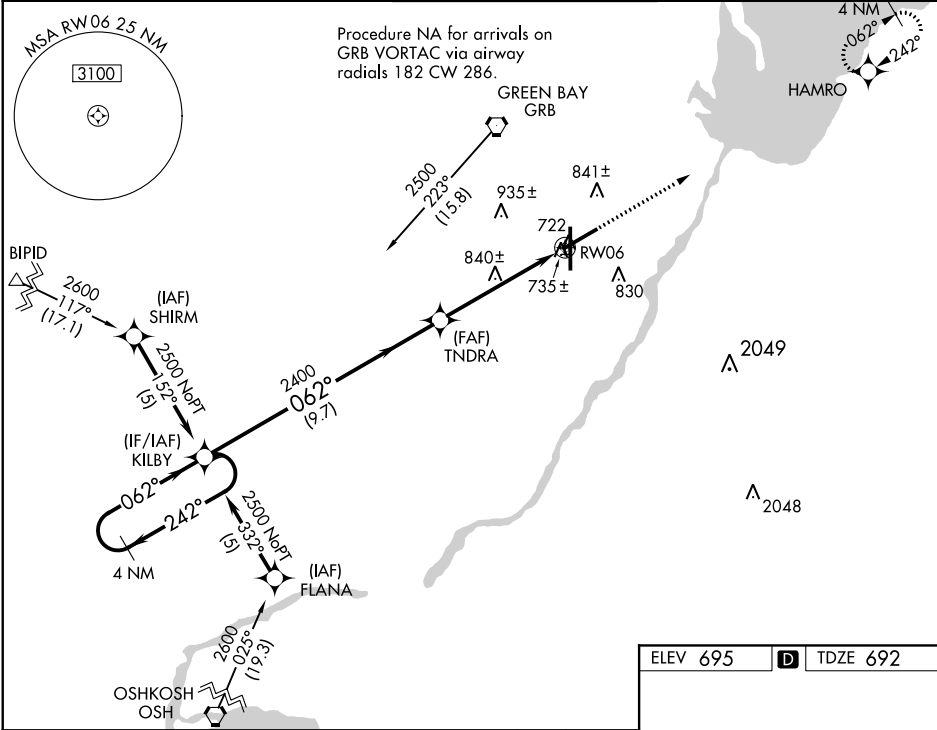
RNAV (GPS) RWY 6
GREEN BAY-AUSTIN STRAUBEL INTL (GRB)

⚠ For uncompensated Baro-VNAV systems, LNAV/VNAV NA below -1.6°C (4°F) or above 47°C (116°F). DME/DME RNP-0.3 NA. For inoperative MALSR, increase ASR LNAV/VNAV Cat D visibility to RVR 5000 and LNAV Cat D visibility to RVR 6000.

MALSR 

MISSED APPROACH: Climb to 2500 direct HAMRO and hold.

ATIS 124.1	GREEN BAY APP CON★ 119.4 338.2	GREEN BAY TOWER ★ 118.7 (CTAF) 0 257.8	GND CON 121.9	CLNC DEL 121.75
----------------------	--	--	-------------------------	---------------------------



CATEGORY	A	B	C	D
LPV DA		892/24	200 (200-½)	
LNAV/VNAV DA		1000/24	308 (400-½)	1000/40 308 (400-¾)
LNAV MDA		1100/24	408 (500-½)	1100/50 408 (500-1)
CIRCLING	1200-1	505 (600-1)	1200-1½ 505 (600-1½)	1260-2 565 (600-2)

