



ILS or LOC RWY 32
SOUTHERN WISCONSIN RGNL (JVL)

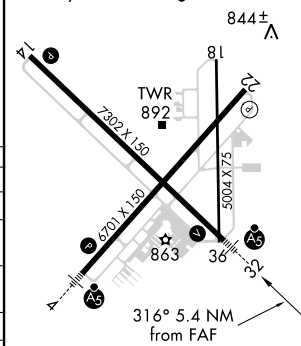
MALSR

MISSED APPROACH: Climb to 1700 then climbing left turn to 3100 via heading 100° and I-REE SE course to TIRRO INT/13.1 DME and hold.

[illegible]

ALTERNATE MISSED APCH
ROCKFORD
110.8 RFD
Chan 45 
← R-278 

ELEV	808	D	TDZE	806
HIRL Rwy 4-22 and 14-32 L				
MIRL Rwy 18-36 L				
REIL Rwy 14 and 22 L				



FAF to MAP 5.4 NM					
Knots	60	90	120	150	180
Min:Sec	5:24	3:36	2:42	2:10	1:48