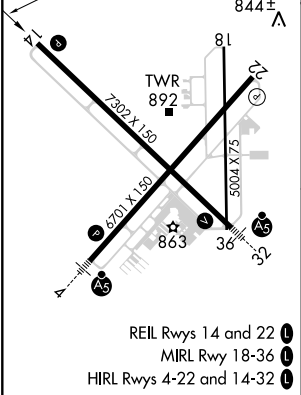
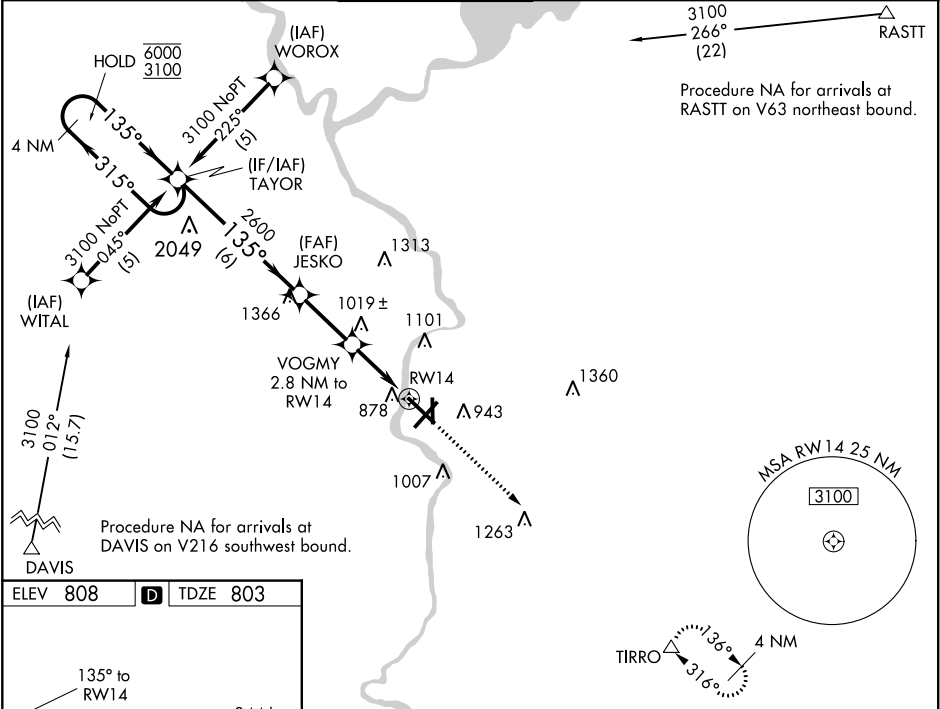


WAAS CH 86617 W14A	APP CRS 135°	Rwy Idg TDZE 803 Apt Elev 808
--	------------------------	---

RNAV (GPS) RWY 14
SOUTHERN WISCONSIN RGNL (JVL)

RNP APCH.		MISSED APPROACH: Climb to 3100 direct TIRRO and hold.
<div><div>▼</div><div>▲</div></div>	<p>Circling Rwy 18 NA at night. Rwy 14 helicopter visibility reduction below $\frac{3}{4}$ SM NA. Baro-VNAV NA when using Rockford altimeter setting. For uncompensated Baro-VNAV systems, LNAV/VNAV NA below -16°C or above 47°C. VDP NA when using Rockford altimeter setting. When local altimeter setting not received, use Rockford altimeter setting and increase all DA 69 feet and all MDA 80 feet; increase LPV all Cats, LNAV/VNAV all Cats, LNAV Cats C and D and Circling Cat D visibility $\frac{1}{4}$ SM.</p>	

ATIS 128.25	ROCKFORD APP CON 121.0 327.0	JANESVILLE TOWER ★ 118.8(CTAF) 225.4	GND CON 121.65	CLNC DEL 121.65	UNICOM 122.95
-----------------------	--	--	--------------------------	---------------------------	-------------------------



4 NM Holding Pattern		TAYOR	JESKO	VOGMY	2.8 NM to RW14	1.3 NM to RW14	3100	TIRRO
6000 ← 315°		3100 → 135°	135°	2600	*1740	*1740		
GP 3.00°		TCH 60						
		6 NM	2.6 NM	1.5 NM	1.3 NM			
CATEGORY	A	B	C	D				
LPV DA	1003-¾		200 (200-¾)					
LNAV/VNAV DA	1222-1½		419 (500-1½)					
LNAV MDA	1280-1	477 (500-1)	1280-1¼	477 (500-1½)	1280-1½	477 (500-1½)		
CIRCLING	1280-1	472 (500-1)	1280-1½	472 (500-1½)	1420-2	612 (700-2)		

EC-3, 03 DEC 2020 to 31 DEC 2020

EC-3, 03 DEC 2020 to 31 DEC 2020