

LOC I-UDY	APP CRS	Rwy Idg	10002
109.55	068°	TDZE	742
		Apt Elev	742

ILS or LOC RWY 7

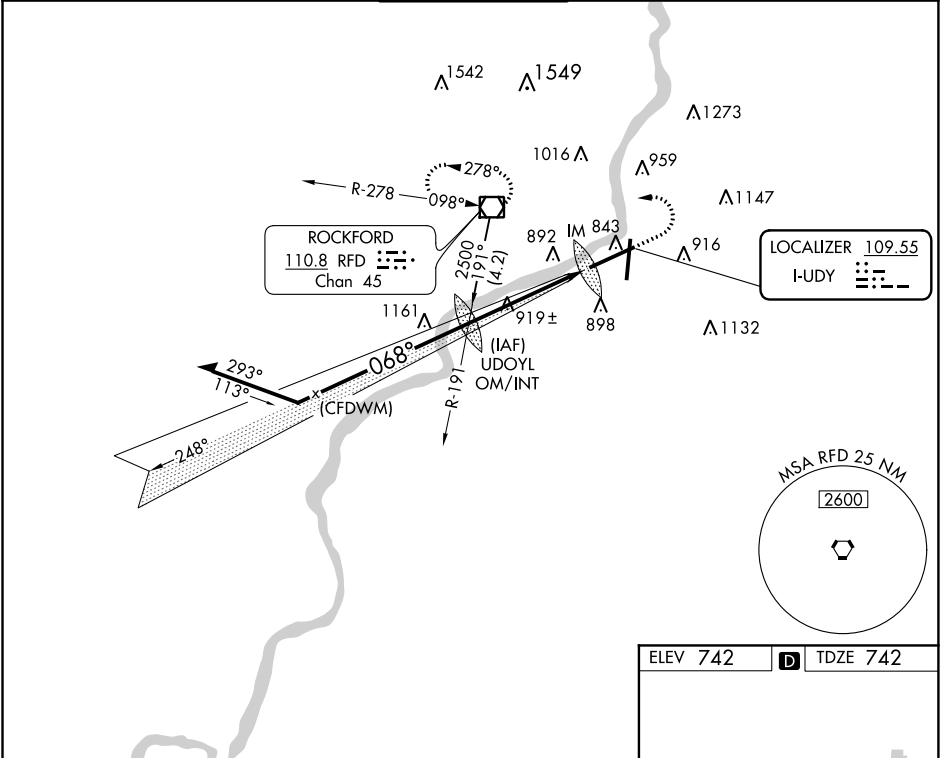
CHICAGO/ROCKFORD INTL (RFD)

  
ASR

  
ALSF-2

MISSED APPROACH: Climb to 1700 then climbing left turn to 2600 direct RFD VOR/DME and hold.

ATIS 127.6	ROCKFORD APP CON 121.0 327.0	ROCKFORD TOWER 118.1 290.375	GND CON 121.9 290.375	CLNC DEL 119.25
---------------	---------------------------------	---------------------------------	--------------------------	--------------------



VGSI and ILS glidepath not coincident (VGSI Angle 3.00/TCH 69).

Remain within 10 NM

2500 068° 2500

GS 3.00° TCH 60

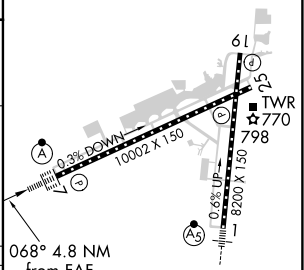
2353

UDOYL OM/INT

1700 2600 RFD

4.7 NM 0.1

ELEV 742 TDZE 742



REIL Rwy 19 and 25  
HIRL Rwy 1-19 and 7-25  
TDZ/CL Rwy 1 and 7

FAF to MAP 4.8 NM

Knots	60	90	120	150	180
Min:Sec	4:48	3:12	2:24	1:55	1:36

CATEGORY	A	B	C	D
S-ILS 7	942/18		200 (200-½)	
S-LOC 7	1200/24		458 (500-½)	1200/50 458 (500-1)
CIRCLING	1220-1 478 (500-1)	1280-1 538 (600-1)	1320-1½ 578 (600-1½)	1460-2¼ 718 (800-2¼)