

WAAS CH 53621 W07A	APP CRS 068°	Rwy Idg 10002 TDZE 742 Apt Elev 742
--	------------------------	--

RNAV (GPS) RWY 7

CHICAGO/ROCKFORD INTL (RFD)

RNP APCH.

⚠

ASR

For uncompensated Baro-VNAV systems, procedure NA below -25°C or above 39°C.

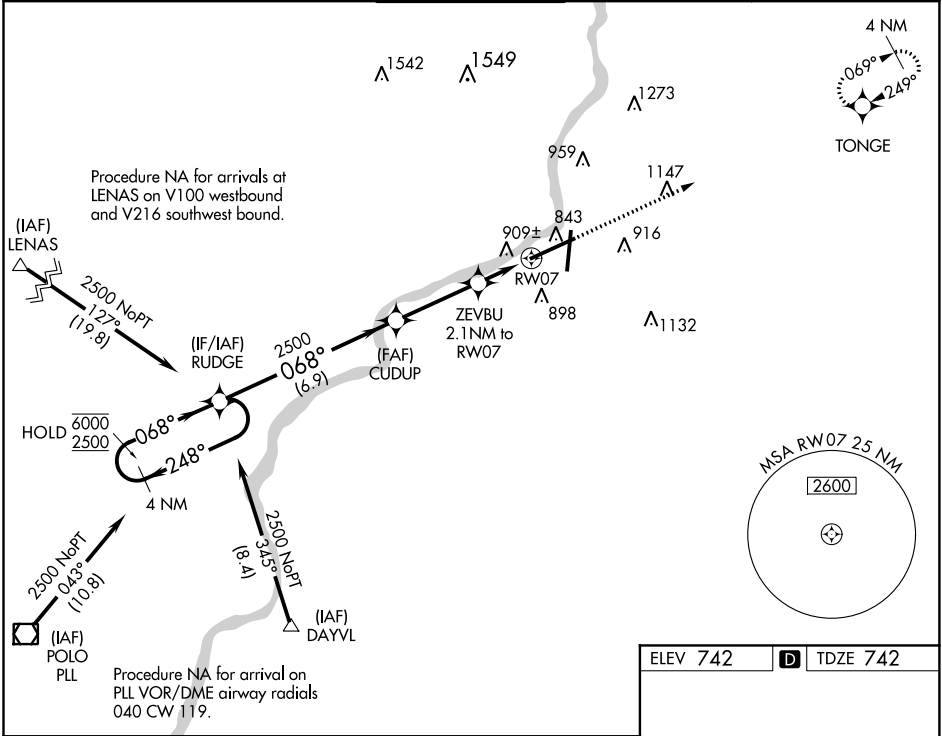
ALSF-2

ⓘ

📶

MISSED APPROACH: Climb to 2500 direct TONGE and hold.

ATIS 127.6	ROCKFORD APP CON 121.0 327.0	ROCKFORD TOWER 118.1 290.375	GND CON 121.9 290.375	CLNC DEL 119.25
----------------------	--	--	---------------------------------	---------------------------



4 NM Holding Pattern

VGSI and RNAV glidepath not coincident (VGSI Angle 3.00/TCH 69°).

2500 TONGE

*RNAV only

GP 3.00° TCH 60

6000 ← 248°

2500 ← 068°

RUDGE

CUDUP

ZEVBU 2.1 NM to RW07

*1.460

1.4 NM to RW07

RW07

6.9 NM

3.2 NM

0.7 NM

1.4 NM

CATEGORY	A	B	C	D
LPV DA	942/24		200 (200-½)	
RNAV/ VNAV DA	1167/45		425 (500-¾)	
RNAV MDA	1240/24	498 (500-½)	1240/50	498 (500-1)
CIRCLING	1240-1 498 (500-1)	1280-1 538 (600-1)	1320-1½ 578 (600-½)	1460-2¼ 718 (800-2¼)

REIL Rwy 19 and 25

HIRL Rwy 1-19 and 7-25

TDZ/CL Rwy 1 and 7