

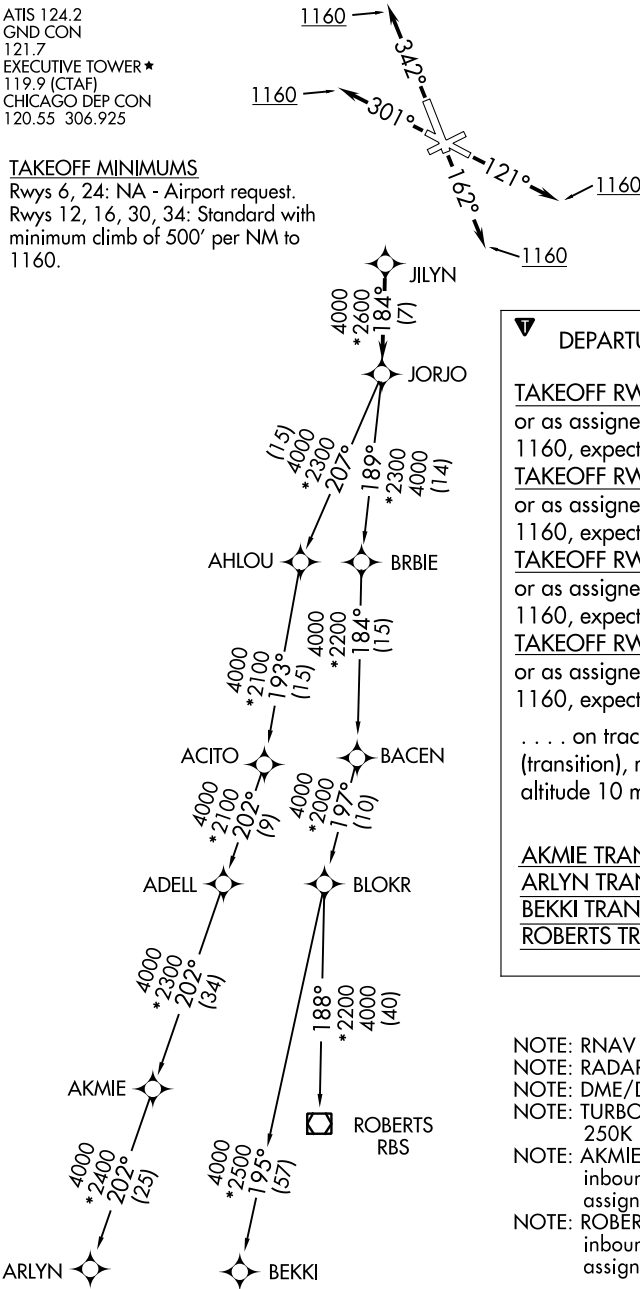
JORJO FIVE DEPARTURE (RNAV)

ATIS 124.2
GND CON
121.7
EXECUTIVE TOWER ★
119.9 (CTAF)
CHICAGO DEP CON
120.55 306.925

TAKEOFF MINIMUMS

Rwys 6, 24: NA - Airport request.
Rwys 12, 16, 30, 34: Standard with
minimum climb of 500' per NM to
1160.

TOP ALTITUDE:
3000



DEPARTURE ROUTE DESCRIPTION

TAKEOFF RWY 12: Climb heading 121° or as assigned by ATC to at or above 1160, expect vectors to JILYN. Thence ...
TAKEOFF RWY 16: Climb heading 162° or as assigned by ATC to at or above 1160, expect vectors to JILYN. Thence ...
TAKEOFF RWY 30: Climb heading 301° or as assigned by ATC to at or above 1160, expect vectors to JILYN. Thence ...
TAKEOFF RWY 34: Climb heading 342° or as assigned by ATC to at or above 1160, expect vectors to JILYN. Thence ...
... on track 184° to JORJO, then on (transition), maintain 3000, expect filed altitude 10 minutes after departure.

AKMIE TRANSITION (JORJO5.AKMIE)
ARLYN TRANSITION (JORJO5.ARLYN)
BEKKI TRANSITION (JORJO5.BEKKI)
ROBERTS TRANSITION (JORJO5.RBS)

NOTE: RNAV 1.
NOTE: RADAR required.
NOTE: DME/DME/IRU or GPS required.
NOTE: TURBOJET depatures maintain 250K until advised by ATC.
NOTE: AKMIE transition: for aircraft inbound to BMI, SPI, or PIA, or as assigned by ATC.
NOTE: ROBERTS transition: for aircraft inbound to CMI or STL, or as assigned by ATC.

NOTE: Chart not to scale.

JORJO FIVE DEPARTURE (RNAV)