

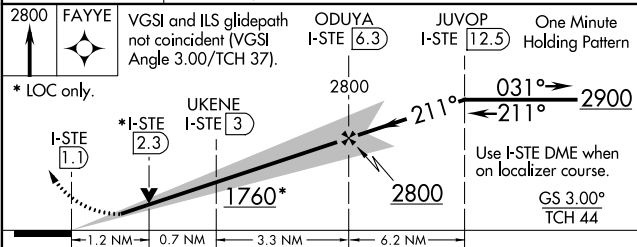
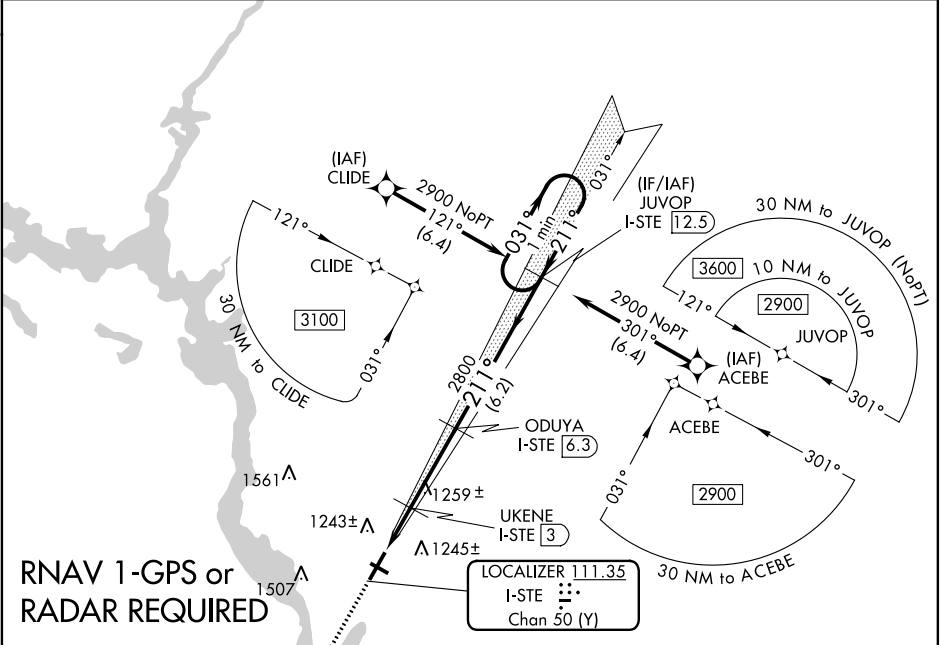
LOC/DME I-STE	APP CRS	Rwy Idg	6028
111.35	211°	TDZE	1110
Chan 50 (Y)		Apt Elev	1110

ILS or LOC RWY 21

STEVENS POINT MUNI (STE)

<div><div>▼</div><div>DME required. RNAV 1-GPS required. For inoperative ALS, increase S-LOC 21 Cat C/D visibility to 1½ SM. Inoperative table does not apply to S-ILS 21 all Cats.</div></div>	<div><div>MALS</div><div><div><div></div></div></div></div> <div><div>MISSED APPROACH: Climb to 2800 direct FAYYE and hold.</div></div>
---	---

AWOS-3 119.275	MINNEAPOLIS CENTER 124.4 317.7	UNICOM 122.7 (CTAF) 0
-------------------	-----------------------------------	--------------------------



CATEGORY	A	B	C	D
S-ILS 21		1360-¾ 250 (300-¾)		
S-LOC 21	1520-¾ 410 (500-¾)		1520-1 410 (500-1)	
CIRCLING	1580-1 470 (500-1)	1600-1 490 (500-1)	1820-2 710 (800-2)	1820-2¼ 710 (800-2¼)

