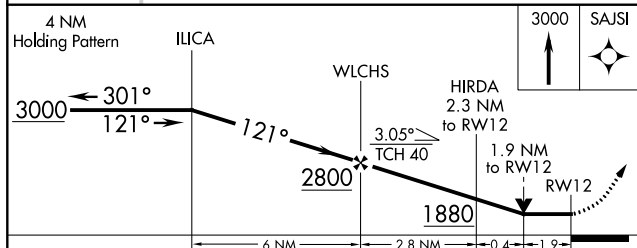
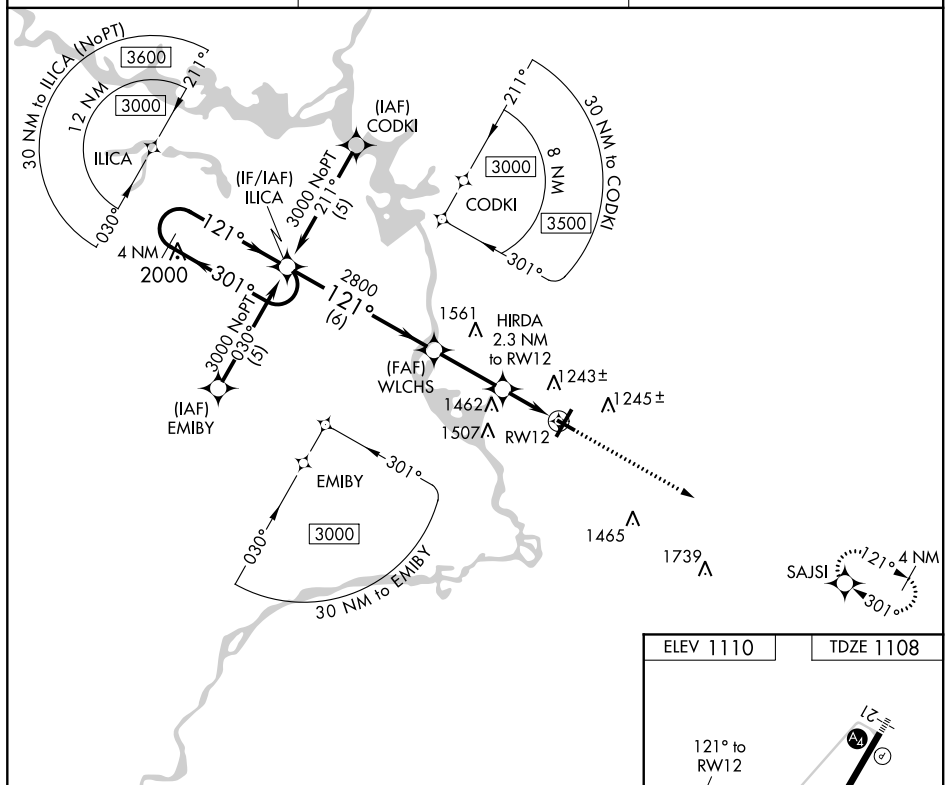



RNAV (GPS) RWY 12
STEVENS POINT MUNI (STE)

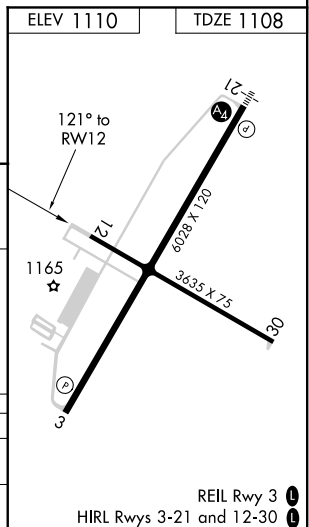
MISSED APPROACH: Climb to 3000 direct SAJSI and hold.

MINNEAPOLIS CENTER
124.4 317.7

UNICOM
122.7 (CTAF) **L**



CATEGORY	A	B	C	D
LNAV MDA	1760-1	652 (700-1)	1760-1 $\frac{3}{4}$ 652 (700-1 $\frac{3}{4}$)	1760-2 652 (700-2)
 CIRCLING	1760-1	650 (700-1)	1820-2 710 (800-2)	1820-2 $\frac{1}{4}$ 710 (800-2 $\frac{1}{4}$)



EC-3, 03 DEC 2020 to 31 DEC 2020