

WAAS CH 86511 W21A	APP CRS 211°	Rwy Idg TDZE 1110 Apt Elev 1110	6028
--	------------------------	---	-------------

RNAV (GPS) RWY 21

STEVENS POINT MUNI (STE)

▼

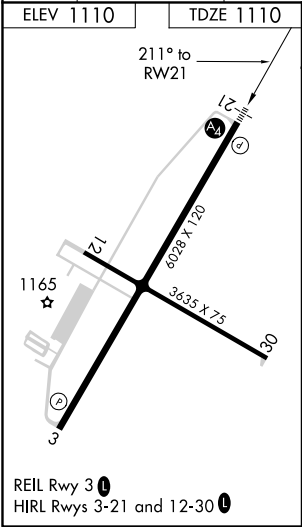
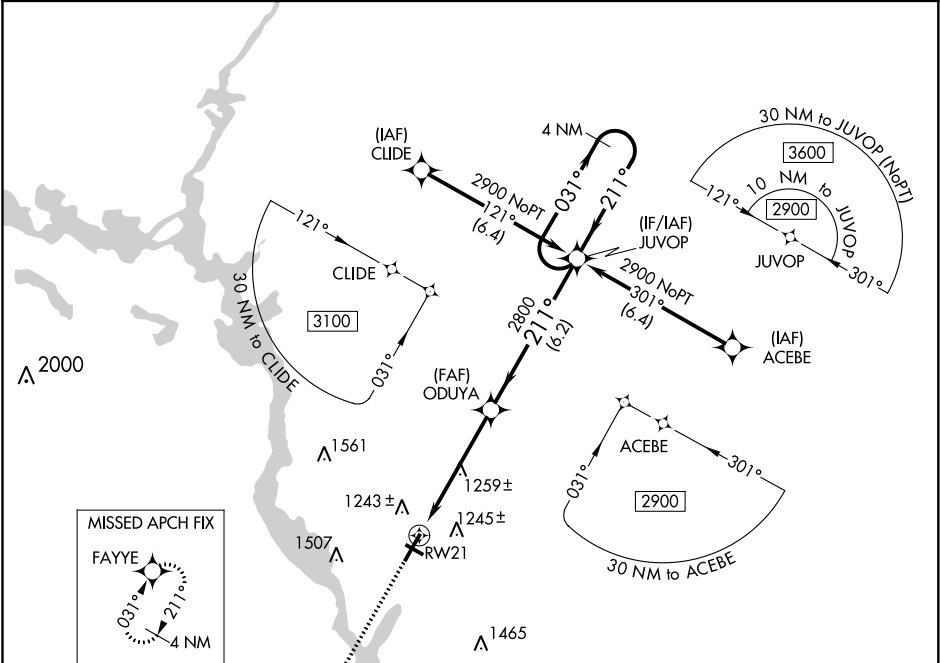
▲

For uncompensated Baro-VNAV systems, LNAV/VNAV NA below -17°C (2°F) or above 54°C (130°F). DME/DME RNP-0.3 NA. Inoperative table does not apply to LPV all Cats. For inoperative ALS, increase LNAV Cat C and D visibility to 1½ SM.

MALS

MISSED APPROACH:
Climb to 2800 direct
FAYYE and hold.

AWOS-3 119.275	MINNEAPOLIS CENTER 124.4 317.7	UNICOM 122.7 (CTAF) 1
--------------------------	--	---------------------------------



2800

FAYYE

VGSI and RNAV glidepath not coincident
(VGSI Angle 3.00/TCH 37).

4 NM

Holding Pattern

JUVOP

031°

211°

2900

ODUYA

2800

211°

2800

GP 3.00°
TCH 44

*LNAV only

1.2 NM to RWY 21

1.2 NM

4 NM

6.2 NM

CATEGORY	A	B	C	D
LPV DA	1360-¾ 250 (300-¾)			
LNAV/VNAV DA	1457-⅞ 347 (400-⅞)			
LNAV MDA	1520-¾ 410 (500-¾)		1520-1 410 (500-1)	
CIRCLING	1580-1 470 (500-1)	1600-1 490 (500-1)	1820-2 710 (800-2)	1820-2¼ 710 (800-2¼)