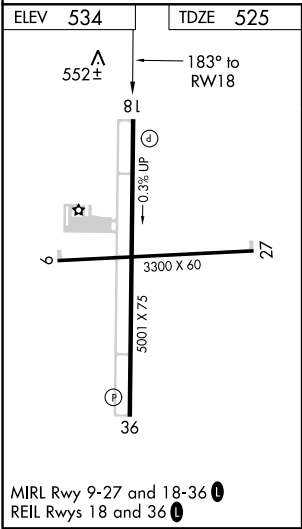
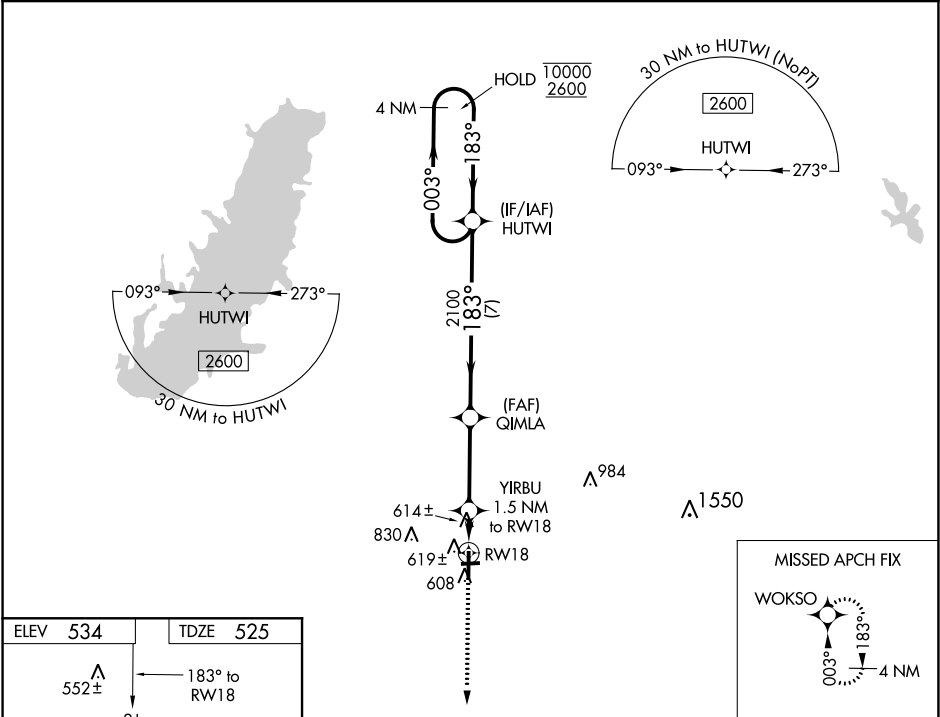


WAAS CH <b>77728</b> <b>W18A</b>	APP CRS <b>183°</b>	Rwy Idg TDZE Apt Elev	<b>5001</b> <b>525</b> <b>534</b>
--	------------------------	-----------------------------	---

RNAV (GPS) RWY 18

CENTRALIA MUNI (ENL)

RNP APCH.		MISSED APPROACH: Climb to 2600 direct WOKSO and hold.
Rwy 18 helicopter visibility reduction below ¾ SM NA. Circling Rwy 9, 27 NA at night.		
AWOS-3 <b>121.125</b>	KANSAS CITY CENTER <b>127.7 351.825</b>	UNICOM <b>122.8 (CTAF) 0</b>



2600

↑

WOKSO

✦

YIRBU

1.5 NM to RW18

1 NM to RW18

RW18

1040

3.00°

TCH 45

QIMLA

2100

183°

HUTWI

4 NM Holding Pattern

003° → 10000

← 183° 2600

1 NM

0.5 NM

3.3 NM

7 NM

CATEGORY	A	B	C	D
LP MDA	880-1 355 (400-1)			
LNAV MDA	900-1 375 (400-1)			
CIRCLING	980-1	1000-1	1180-1¾	1180-2
	446 (500-1)	466 (500-1)	646 (700-1¾)	646 (700-2)