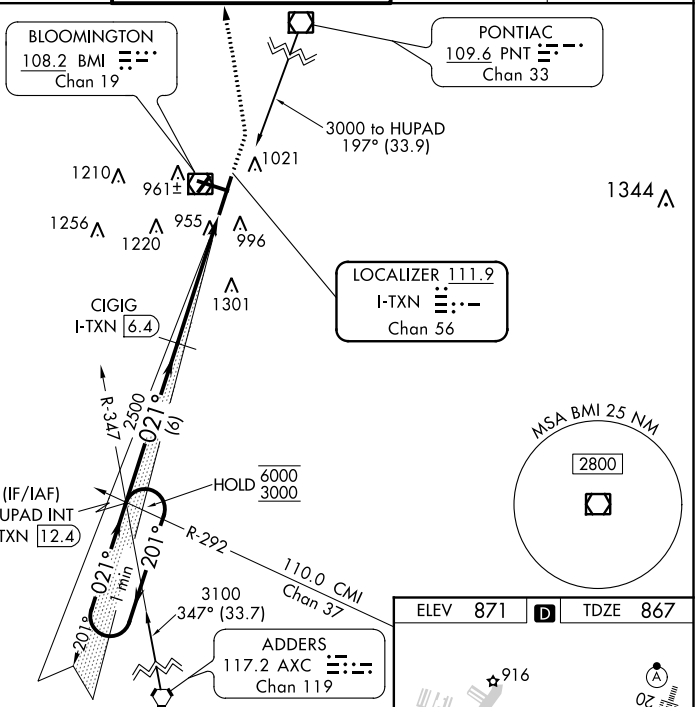


ILS or LOC RWY 2
CENTRAL IL RGNL ARPT AT BLOOMINGTON-NORMAL (BMI)

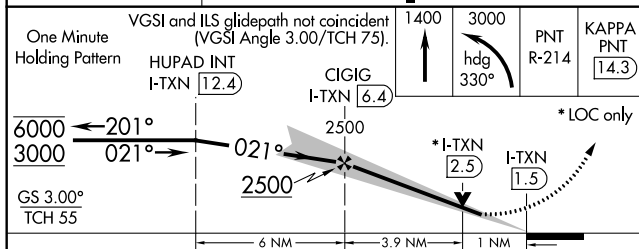
T Autopilot coupled approach NA below 1100. VDP NA with General Downing-Peoria Intl. altimeter setting. Inop table does not apply to S-ILS 2. For inop ALS, increase S-LOC 2 Cat A/B visibility to RVR 5500 and Cat C/D to RVR 6000. When local altimeter setting not received, use General Downing-Peoria Intl altimeter setting and increase all DA 116 feet and all MDA 120 feet, and S-LOC 2 Cat C/D visibility to RVR 5500. Circling Cat C/D visibility ¼ SM. For inop ALS when using General Downing-Peoria Intl altimeter setting, increase S-LOC 2 all Cat visibility to RVR 4500, S-LOC 2 Cat C/D visibility to 1¾ SM.



MISSED APPROACH:
Climb to 1400 then
climbing left turn to 3000
on heading 330° and on
PNT VOR/DME R-214 to
KAPPA INT/PNT 14.3
DME and hold.



ALTERNATE PEORIA
MISSED PIA
APCH FIX 115.2
Chan 99
←R-275—095°→
275°



CATEGORY	A	B	C	D
S-ILS 2	1067/40 200 (200-¾)			
S-LOC 2	1260/40 393 (400-¾)			
C CIRCLING	1340-1 469 (500-1)	1620-2¼ 749 (800-2¼)	1620-2½ 749 (800-2½)	