


LOC/DME I-BMI	APP CRS	Rwy Idg	6525
110.95	291°	TDZE	871
Chan 46 (Y)		Apt Elev	871

ILS or LOC RWY 29

CENTRAL IL RGNL ARPT AT BLOOMINGTON-NORMAL (BMI)

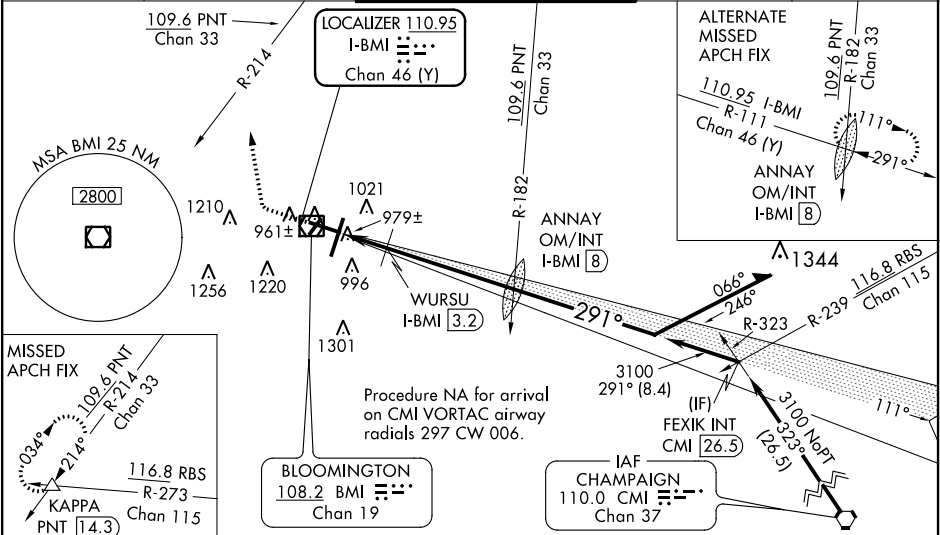
LOC minima: For inop ALS, increase S-LOC 29 Cats C and D visibility to 1 3/4 SM; WURSU fix minima: For inop ALS, increase S-LOC 29 visibility to RVR 5500. For inop ALS when using General Downwing-Peoria Intl altimeter setting: increase S-ILS 29 visibility to RVR 4500; increase S-LOC 29 Cats C and D visibility to 1 3/4 SM; increase WURSU fix minima S-LOC 29 Cats C and D visibility to 1 3/4 SM. **RVR 1800 authorized with use of FD or AP or HUD to DA. (NA when using General Downwing-Peoria Intl altimeter setting).

MALSR



MISSED APPROACH: Climb to 1500 then climbing right turn to 3000 on heading 350° and PNT VOR/DME R-214 to KAPPA INT/PNT 14.3 DME and hold.

ATIS 135.35	PEORIA APP CON 128.725 256.9	BLOOMINGTON TOWER * 124.6 (CTAF) 0 269.575	GND CON 121.65	UNICOM 122.95
----------------	---------------------------------	---	-------------------	------------------



ELEV 871	D	TDZE 871	1500	3000	PNT R-214	KAPPA	ANNAY OM/INT I-BMI [8]	Remain within 10 NM
<p>*1500 when using General Downwing-Peoria Intl altimeter setting</p> <p>*LOC only</p> <p>WURSU I-BMI [2.4] I-BMI [3.2]</p> <p>I-BMI [1.4]</p> <p>3058</p> <p>111°</p> <p>291°</p> <p>3100</p> <p>GS 3.00° TCH 56</p>								
CATEGORY		A		B		C		D
S-ILS 29 **		1071/24		200 (200-1/2)				
S-LOC 29		1380/24 509 (600-1/2)		1380/55 509 (600-1)				
CIRCLING		1380-1 509 (600-1)		1620-2 1/4 749 (800-2 1/4)		1620-2 1/2 749 (800-2 1/2)		
WURSU FIX MINIMUMS								
S-LOC 29		1240/24 369 (400-1/2)		1240/40 369 (400-3/4)				
CIRCLING		1340-1 469 (500-1)		1620-2 1/4 749 (800-2 1/4)		1620-2 1/2 749 (800-2 1/2)		