

WAAS CH 56303 W02A	APP CRS 021°	Rwy Idg 8000 TDZE 867 Apt Elev 871
--	------------------------	---

RNAV (GPS) RWY 2

CENTRAL IL RGNL ARPT AT BLOOMINGTON-NORMAL (BMI)

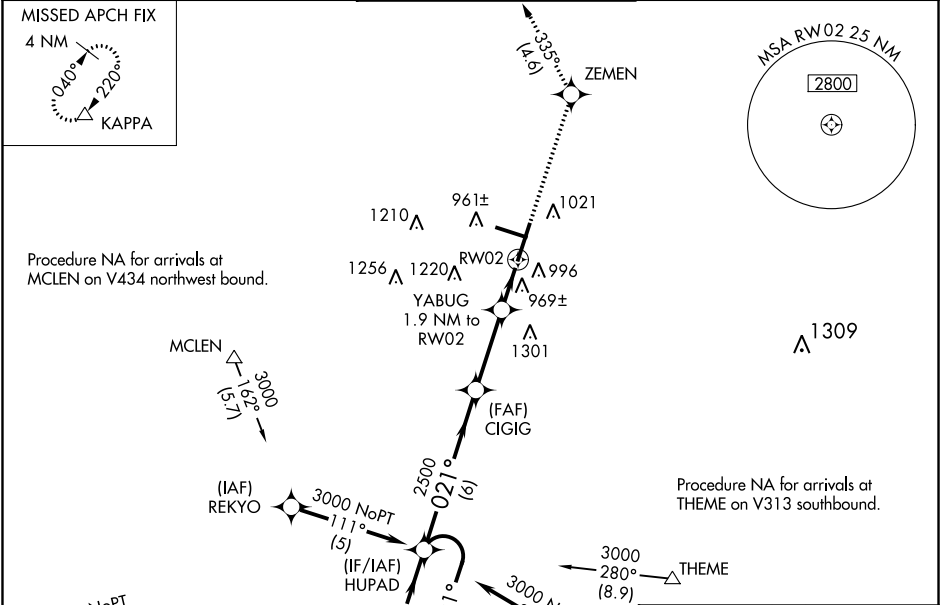
RNP APCH.

▼ For uncompensated Baro-VNAV systems, LNAV/VNAV NA below -16°C or above 54°C. Baro-VNAV and VDP NA when using General Downing-Peoria Intl altimeter setting. When local altimeter setting not received, use General Downing-Peoria Intl altimeter setting: increase all DA 116 feet and all MDA 120 feet; increase LPV and LNAV/VNAV all Cnts visibility ½ SM, LNAV Cnts C/D visibility ¾ SM, and Circling all Cnts visibility ¼ SM. Inop table does not apply.

MALSR

MISSED APPROACH:
Climb to 3000 direct ZEMEN then on track 335° to KAPPA and hold.

ATIS 135.35	PEORIA APP CON 128.725 256.9	BLOOMINGTON TOWER ★ 124.6 (CTAF) 0 269.575	GND CON 121.65	UNICOM 122.95
-----------------------	--	--	--------------------------	-------------------------



ELEV 871 D TDZE 867

TDZ/CL Rwy 20
HIRL Rwy 2-20 and 11-29

VGSI and RNAV glidepath not coincident (VGSI Angle 3.00/TCH 75).

4 NM Holding Pattern HUPAD

GP 3.00° TCH 55

3000 201° 021° 021°

2500 1520

6 NM 3 NM 1 NM 0.9

3000 ZEMEN tr 335° KAPPA

YABUG 1.9 NM to RW02

*LNAV only

*0.9 NM to RW02

916

6525 X 150

8000 X 150

917±

20

2

201° to RW02

TWR 972

CATEGORY	A	B	C	D
LPV DA		1214-1¼	347 (400-1¼)	
LNAV/VNAV DA		1269-1¼	402 (400-1¼)	
LNAV MDA	1220-1	353 (400-1)	1220-1¼	353 (400-1¼)
CIRCLING	1340-1	469 (500-1)	1620-2¼ 749 (800-2¼)	1620-2½ 749 (800-2½)