

WAAS CH <b>63020</b> <b>W15A</b>	APP CRS <b>148°</b>	Rwy Idg TDZE <b>745</b> Apt Elev <b>745</b>
--	------------------------	---

RNAV (GPS) RWY 15L

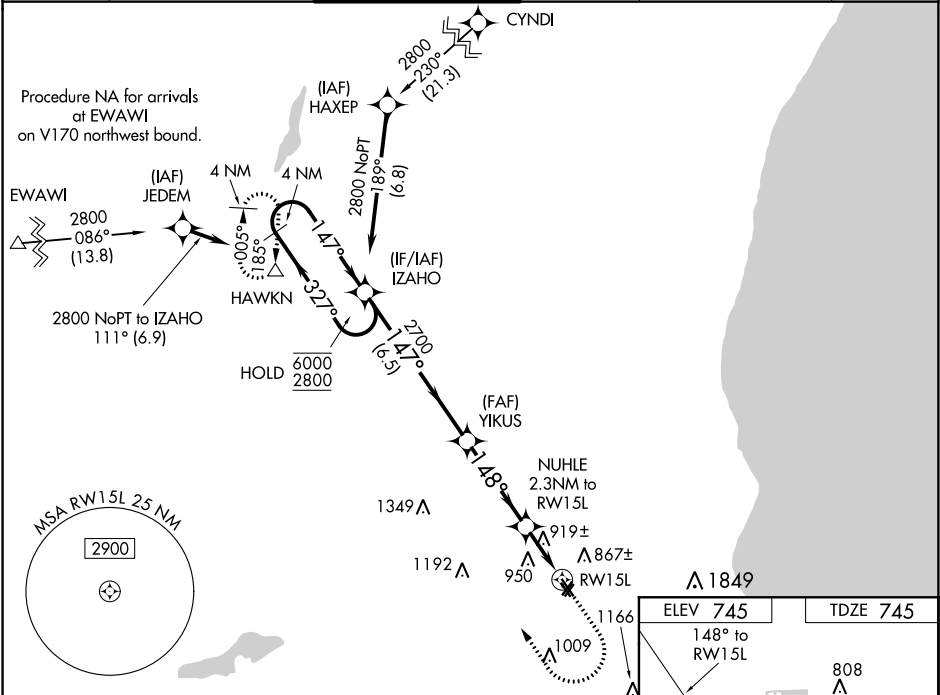
LAWRENCE J TIMMERMAN (MWC)

RNP APCH.

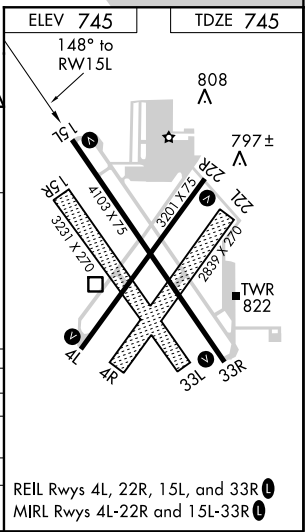
⚠ Circling NA to Rwy 4R, 15R, 22L and 33L. Rwy 15L helicopter visibility reduction below ¾ SM NA. For uncompensated Baro-VNAV systems, LNAV/VNAV NA below -16°C or above 54°C. VDP and Baro-VNAV NA when using General Mitchell Intl altimeter setting. When local altimeter setting not received, use General Mitchell Intl altimeter setting and increase LPV DA to 1024 feet and LNAV/VNAV to DA 1251 feet; increase all MDAs 40 feet and LNAV visibility Cats C and D ½ SM, and Circling visibility Cat C ¼ SM.

MISSED APPROACH:  
Climb to 1300 then  
climbing right turn to  
3000 direct HAWKN  
and hold.

ATIS <b>128.3</b>	MILWAUKEE APP CON <b>125.35 307.0</b>	TIMMERMAN TOWER ★ <b>120.5 (CTAF) 0</b>	GND CON <b>121.7</b>	CLNC DEL <b>121.7</b> (When twr closed)	UNICOM <b>122.95</b>
----------------------	--	--	-------------------------	--	-------------------------



4 NM Holding Pattern		IZAHO		YIKUS		NUHLE		HAWKN	
6000 ← 327°		2800 ← 147°		2700		2.3 NM to RWY 15L		* 1.2 NM to RWY 15L	
GP 3.00°		TCH 41		* 1500		RWY 15L		* 1.2 NM to RWY 15L	
A		B		C		D			
LPV DA		995-1		250 (300-1)					
LNAV/VNAV DA		1222-1½		477 (500-1½)					
LNAV MDA		1180-1		435 (500-1)		1180-1¼		435 (500-1¼)	
CIRCLING		1220-1		1340-1		1340-1½		1340-2	
		475 (500-1)		595 (600-1)		595 (600-½)		595 (600-2)	



EC-3, 03 DEC 2020 to 31 DEC 2020

EC-3, 03 DEC 2020 to 31 DEC 2020