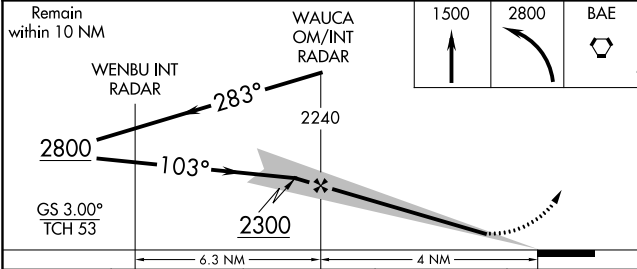
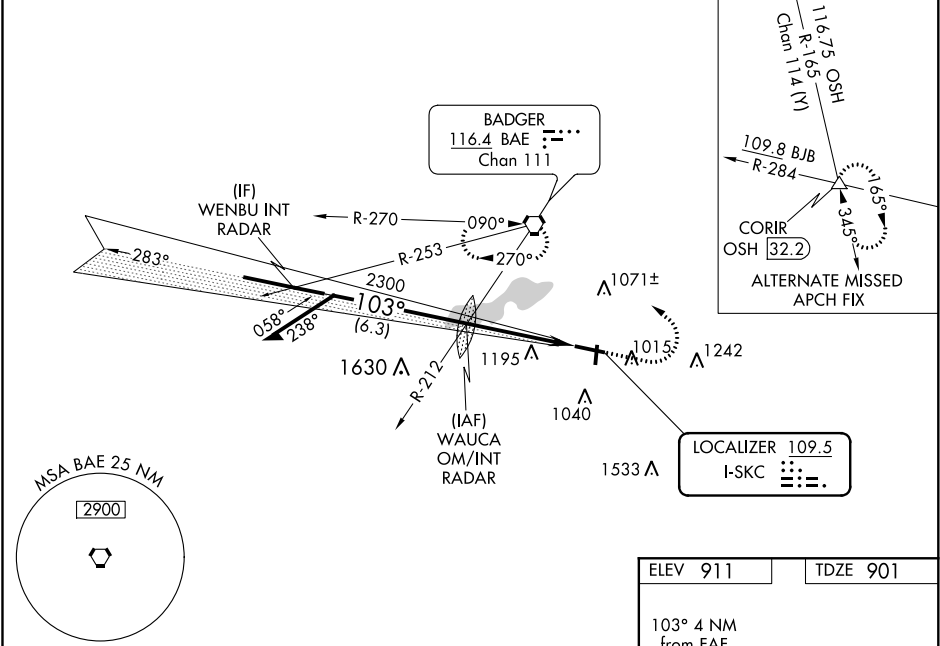


LOC I-SKC 109.5	APP CRS 103°	Rwy Idg 5849 TDZE 901 Apt Elev 911
---------------------------	------------------------	---

ILS or LOC RWY 10

WAUKESHA COUNTY (U/S)

RADAR required for procedure entry.			<div>MALSR</div> <div></div>	<div>MISSED APPROACH:</div> <div>Climb to 1500 then climbing left turn to 2800 direct BAE VORTAC and hold.</div>		
<div>⚠</div> <div>For inoperative MALSR, increase S-LOC 10 Cat C/D visibility to 1½ mile. For inoperative MALSR when using Lawrence J Timmerman altimeter setting, increase S-LOC 10 Cat C/D visibility to 1½ mile. When local altimeter setting not received, use Lawrence J Timmerman altimeter setting and increase DA 46 feet and all MDA 60 feet, increase S-LOC 10 Cat C/D visibility to 1¼ mile, and increase Circling Cat D visibility ¼ mile.</div>						
ATIS 118.875	MILWAUKEE APP CON 125.35 307.0	WAUKESHA TOWER ★ 123.7 (CTAF)	GND CON 121.6	CLNC DEL 121.6	CLNC DEL 128.7 (When twr closed)	UNICOM 122.95



CATEGORY	A	B	C	D
S-ILS-10	1101-½		200 (200-½)	
S-LOC-10	1400-½	499 (500-½)	1400-1	499 (500-1)
CIRCLING	1460-1 549 (600-1)	1480-1 569 (600-1)	1520-1¾ 609 (700-1¾)	1600-2¼ 689 (700-2¼)

