

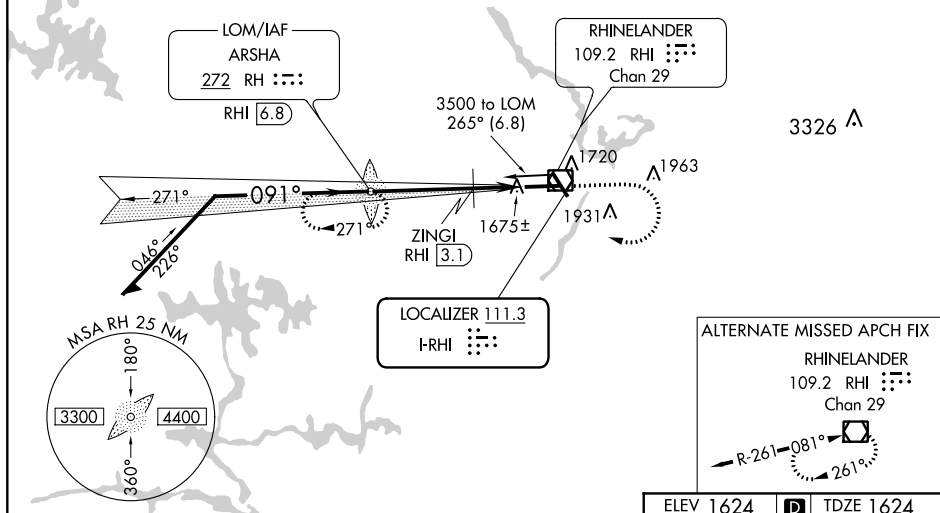
ILS or LOC RWY 9

ADF required. When local altimeter setting not received, use Tomahawk altimeter setting and increase DA 59 feet and MDA 60 feet, increase S-LOC 9 and Circling Cats C and D visibility $\frac{1}{4}$ mile, and increase ZINGI Fix Minimums S-LOC 9 and Circling Cats C and D visibility $\frac{1}{4}$ mile.
****DME from RHI VOR/DME.**

MISSED APPROACH:
Climb to 2100 then
climbing right turn to
3500 direct ARSHA
LOM/RHI 6.8 DME
and hold.

UNICOM
123.0 (CTAF)

ADF or DME REQUIRED



* LOC only.

GI
3.1

ELEV 1624	D	TDZE 1624
-----------	----------	-----------

HIRL Rwy 9-27 and 15-33 **L**
REIL Rwy 15, 27 and 33 **L**

FAF to MAP 5.6 NM

Knots	60	90	120	150	180
Min:Sec	5:36	3:44	2:48	2:14	1:52

RHINELANDER-ONEIDA COUNTY (RHT)

ILS or LOC RWY 9