

APP CRS  
150°

Rwy Idg  
TDZE  
Apt Elev

5201  
1600  
1624

RNAV (GPS) RWY 15

RHINELANDER-ONEIDA COUNTY (RHI)

T

A

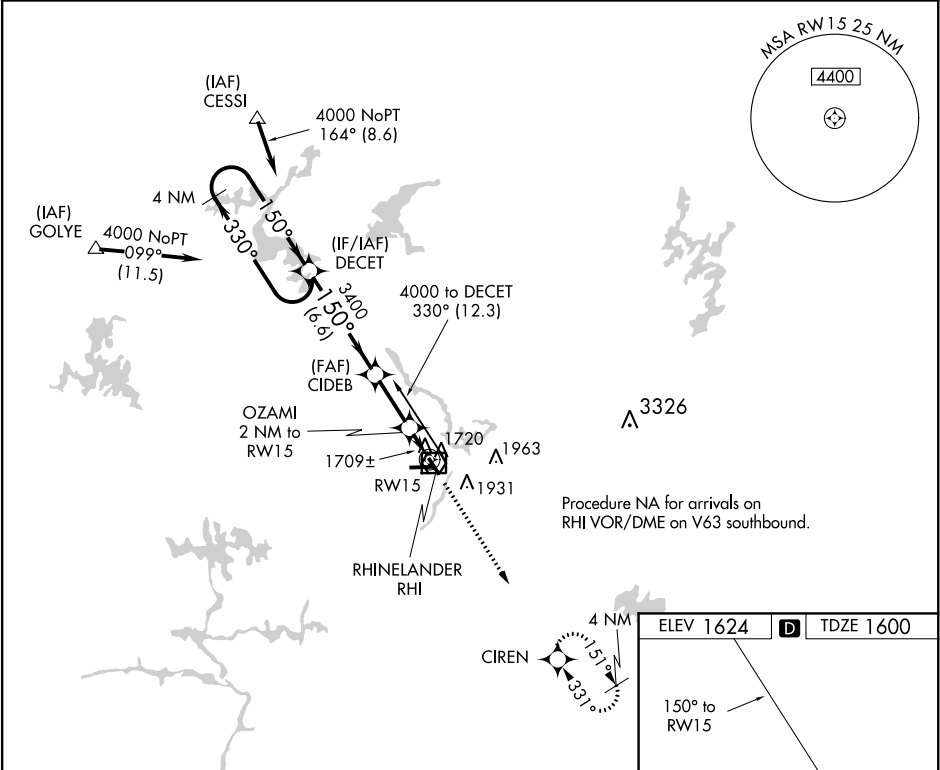
\*

-31°C

Helicopter visibility reduction below ¾ SM NA. DME/DME RNP-0.3 NA. When local altimeter setting not received, use Tomahawk altimeter setting and increase all MDA 60 feet, increase LNAV and Circling visibility Cts C/D ¼ mile.

MISSED APPROACH:  
Climb to 3500 direct CIREN and hold.

ASOS 126.825	MINNEAPOLIS CENTER 133.65 281.5	UNICOM 123.0 (CTAF) 0
-----------------	------------------------------------	--------------------------



4 NM Holding Pattern

DECT

4000

330°

150°

150°

3400

3.05° TCH 53

3.4 NM

2280

0.8 NM to RW15

0.4 NM to RW15

3500 CIREN

150° to RW15

6799 X 150

0.4% UP

1659

500

33

VGSI and descent angles not coincident (VGSI Angle 3.75/TCH 53).

6.6 NM

3.4 NM

1.2

0.8

CATEGORY	A	B	C	D
LNAV MDA	1980-1 380 (400-1)			1980-1¼ 380 (400-1¼)
CIRCLING	2060-1 436 (500-1)	2220-1 596 (600-1)	2260-1¾ 636 (700-1¾)	2260-2 636 (700-2)

RHINELANDER, WISCONSIN

Amdt 1C 02MAR17

RHINELANDER-ONEIDA COUNTY (RHI)

RNAV (GPS) RWY 15

HIRL Rwy 9-27 and 15-33

REIL Rwy 15, 27 and 33

EC-3, 03 DEC 2020 to 31 DEC 2020

EC-3, 03 DEC 2020 to 31 DEC 2020