

WAAS CH 50217 W27A	APP CRS 271°	Rwy Idg TDZE 1606 Apt Elev 1624	6799
--	------------------------	---	-------------

RNAV (GPS) RWY 27

RHINELANDER-ONEIDA COUNTY (RHI)

⚠

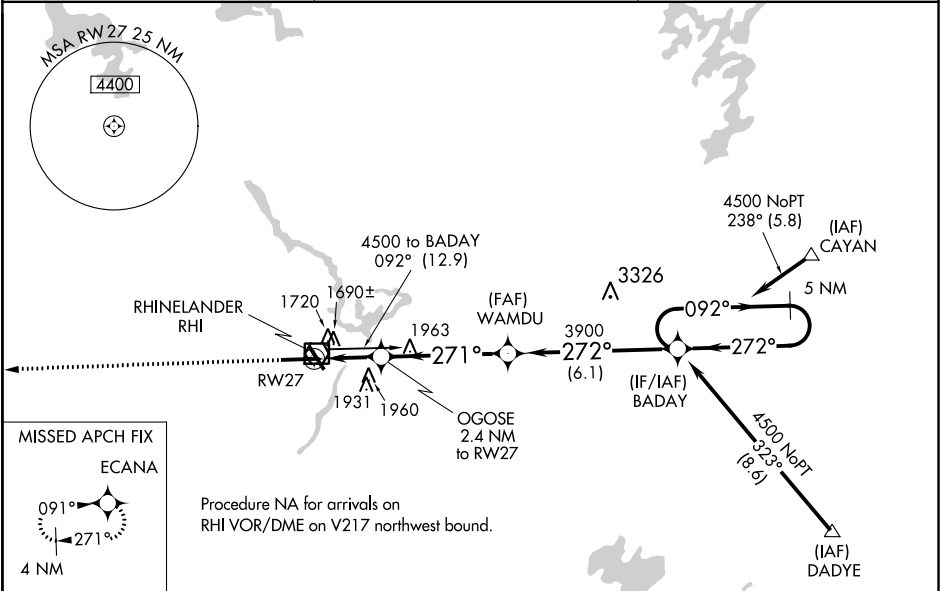
❄

-31°C

For uncompensated Baro-VNAV systems, LNAV/VNAV NA below -18°C (0°F) or above 46°C (114°F). DME/DME RNP-0.3 NA. When local altimeter setting not received, use Tomahawk altimeter setting and increase all DA and MDA 60 feet, increase LPV and LNAV/VNAV visibility all Cats, LNAV and Circling visibility Cats C/D ¼ mile. Baro-VNAV and VDP NA when using Tomahawk altimeter setting.

MISSED APPROACH:
Climb to 4000 direct ECANA and hold.

ASOS 126.825	MINNEAPOLIS CENTER 133.65 281.5	UNICOM 123.0 (CTAF) 0
------------------------	---	---------------------------------



ELEV 1624	D	TDZE 1606
-----------	----------	-----------

4000 ECANA

271° to RW27

6799 X 1.50
0.4% UP
3500 X 1.00
1659 X 0.33

OGOSE 2.4 NM to RW27

* 1.7 NM to RW27

* 2420

WAMDU

3900

BADAY

5 NM Holding Pattern

092° → 4500

← 272°

GP 3.00° TCH 50

CATEGORY	A	B	C	D
LPV DA	1806-3/4 200 (200-3/4)			
LNAV/VNAV DA	1983-1 3/4 377 (400-1 1/4)			
LNAV MDA	2180-1 574 (600-1)	2180-1 1/2 574 (600-1 1/2)	2180-1 3/4 574 (600-1 3/4)	2180-1 3/4 574 (600-1 3/4)
CIRCLING	2180-1 556 (600-1)	2220-1 596 (600-1)	2260-1 3/4 636 (700-1 3/4)	2260-2 636 (700-2)