

WAAS CH <b>97715</b> <b>W09A</b>	APP CRS <b>091°</b>	Rwy Idg TDZE <b>1624</b> Apt Elev <b>1624</b>	<b>6799</b>
--	------------------------	---	-------------

RNAV (GPS) RWY 9

RHINELANDER-ONEIDA COUNTY (RHI)

▼

▲

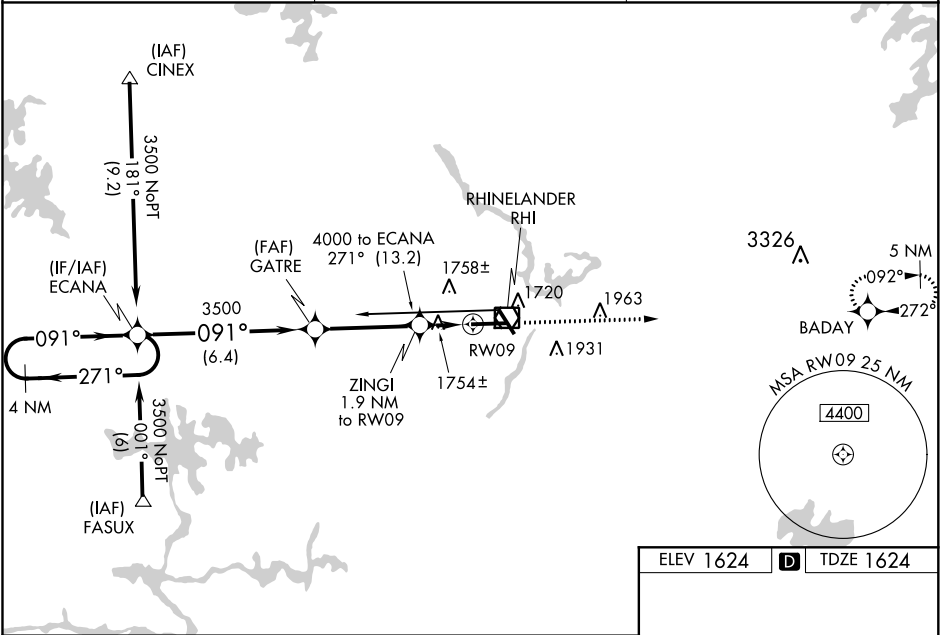
❄

Baro-VNAV NA when using Tomahawk altimeter setting. For uncompensated Baro-VNAV systems, LNAV/VNAV NA below -18°C (0°F) or above 45°C (113°F). DME/DME RNP-0.3 NA. When local altimeter setting not received, use Tomahawk altimeter setting: increase LPV all Cats DA to 1883 feet, LNAV/VNAV all Cats DA to 2109 feet and LNAV/VNAV all Cats visibility 1/8 mile; increase all MDA 60 feet and LNAV Cat C/D and Circling Cat C/D visibilities 1/4 mile. For inop MALSR, increase LNAV/VNAV all Cats visibility to 1 1/8 mile. VDP NA when using Tomahawk altimeter setting.

MALSR

MISSED APPROACH:  
Climb to 4500 direct  
BADAY and hold.

ASOS <b>126.825</b>	MINNEAPOLIS CENTER <b>133.65 281.5</b>	UNICOM <b>123.0 (CTAF) 1</b>
------------------------	---	---------------------------------



4 NM Holding Pattern

GP 3.00°  
TCH 52

ECANA

GATRE

ZINGI

RW09

BADAY

3500

3500

3500

2280

4500

6.4 NM

3.7 NM

0.8 NM

1.1 NM

CATEGORY	A	B	C	D
LPV DA	1824-1/2		200 (200-1/2)	
LNAV/VNAV DA	2050-1		426 (500-1)	
LNAV MDA	2020-1/2	396 (400-1/2)	2020-5/8	396 (400-5/8)
CIRCLING	2060-1 436 (500-1)	2220-1 596 (600-1)	2260-1 3/4 636 (700-1 3/4)	2260-2 636 (700-2)

ELEV 1624

TDZE 1624

HIRL Rwy 9-27 and 15-33

REIL Rwy 15, 27 and 33