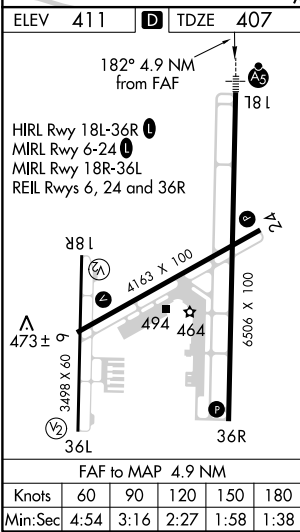
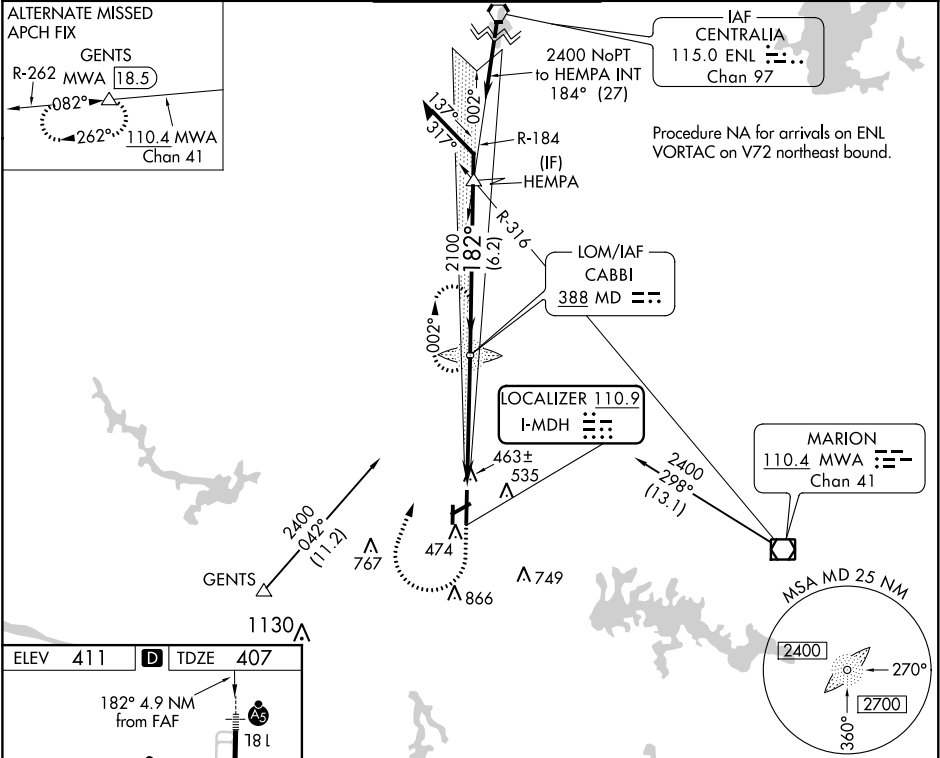


LOC I-MDH 110.9	APP CRS 182°	Rwy Idg TDZE Apt Elev 6506 407 411
---------------------------	------------------------	--

ILS or LOC RWY 18L
SOUTHERN ILLINOIS (MDH)

<p>▼ ADF Required. When local altimeter setting not received, use Williamson Co Rgnl altimeter setting and increase DA 36 feet and all MDA 40 feet.</p> <p>▲ NA For inoperative MALSR, increase S-LOC 18L Cat D visibility to 1 mile.</p>	<p>MALSR</p> <p>MISSED APPROACH: Climb to 2100 then climbing right turn to 2400 direct CABBI LOM and hold.</p>
---	--

ATIS 119.725	KANSAS CITY CENTER 127.475 346.275	CARBONDALE TOWER ★ 125.35 (CTAF) 0 322.4	GND CON 121.8	UNICOM 122.95
------------------------	--	--	-------------------------	-------------------------



2100	2400	MD	MD LOM	2037	002°	2400	182°	2100	GS 3.00° TCH 55'
4.9 NM									
CATEGORY	A	B	C	D					
S-ILS 18L	607-½ 200 (200-½)								
S-LOC 18L	720-½ 313 (400-½) 720-¾ 313 (400-¾)								
CIRCLING	900-1 489 (500-1)				900-1½ 489 (500-1½)		980-2 569 (600-2)		