

LOC I-DPA
109.5

APP CRS
097°

Rwy Idg
TDZE
Apt Elev
4750
756
759

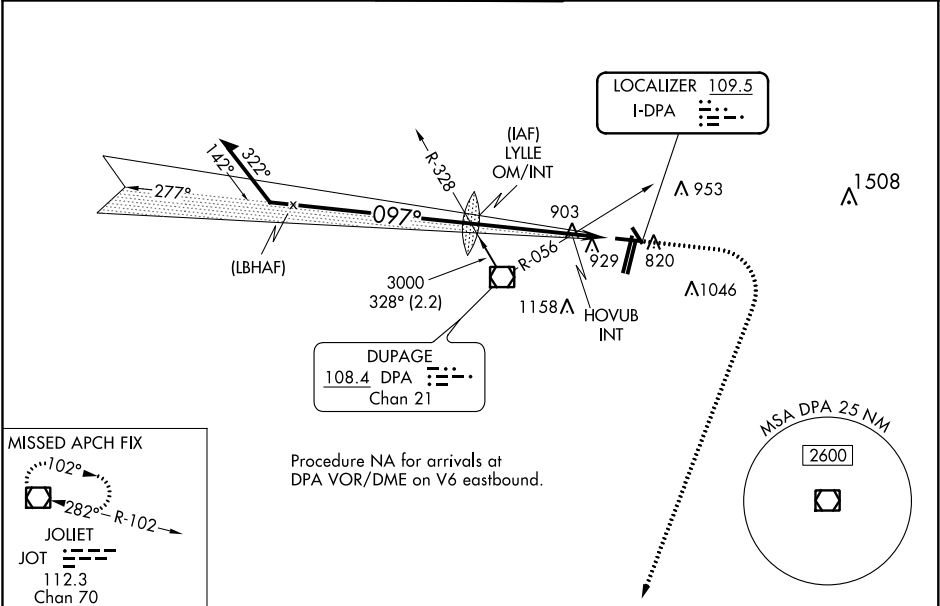
ILS or LOC RWY 10

DUPAGE (DPA)

⚠ When local altimeter setting not received, use Chicago/Aurora altimeter setting and increase all DA 37 feet and all MDA 40 feet, and increase S-LOC 10 Cats C and D and HOVUB INT minimums S-LOC 10 Cats C and D visibility ½ mile. Circling Rwy 15, 28, 33 NA at night.

MISSED APPROACH: Climb to 1200 then climbing right turn to 2600 direct JOT VOR/DME and hold.

ATIS 132.075	CHICAGO APP CON 133.5 349.0	DUPAGE TOWER 120.9 257.8	GND CON 121.8	CLNC DEL 119.75
------------------------	---------------------------------------	------------------------------------	-------------------------	---------------------------



Remain within 10 NM				1200	2600	JOT	ELEV 759	TDZE 756
				* LOC only. * 1340 when using Chicago/Aurora altimeter setting.				
CATEGORY	A	B	C	D				
S-ILS 10	956-¾ 200 (200-¾)							
S-LOC 10	1300-1	544 (600-1)	1300-1⅝	544 (600-1⅝)				
CIRCLING	1300-1	541 (600-1)	1360-1¾ 601 (700-1¾)	1360-2 601 (700-2)				
HOVUB INT MINIMUMS (DUAL VOR RECEIVERS REQUIRED)								
S-LOC 10	1220-1	464 (500-1)	1220-1⅜	464 (500-1⅜)				
CIRCLING	1260-1	501 (600-1)	1360-1¾ 601 (700-1¾)	1360-2 601 (700-2)				
					097° 5.3 NM from FAF			
					FAF to MAP 5.3 NM			
					Knots	60	90	120 150 180
					Min:Sec	5:18	3:32	2:39 2:07 1:46