

WAAS CH <b>53618</b> <b>W10A</b>	APP CRS <b>097°</b>	Rwy Idg <b>4750</b> TDZE <b>756</b> Apt Elev <b>759</b>
--	------------------------	---

RNAV (GPS) RWY 10

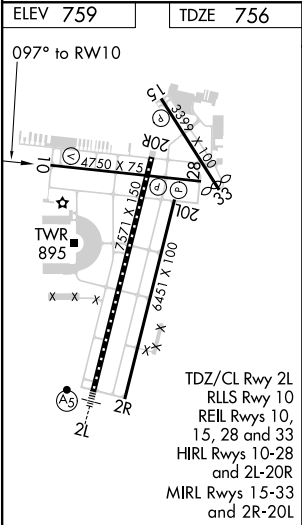
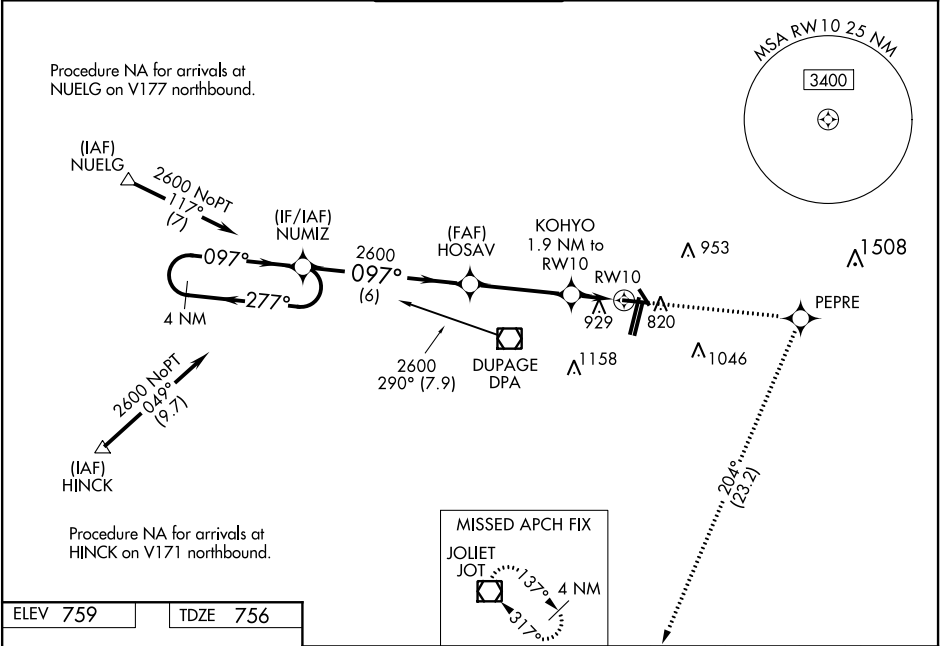
DUPAGE (DPA)

⚠

For uncompensated Baro-VNAV systems, LNAV/VNAV NA below -16°C (4°F) or above 54°C (130°F). DME/DME RNP-0.3 NA. When local altimeter setting not received, use Aurora altimeter setting and increase all DA 37 feet and all MDA 40 feet, increase LNAV Cat D visibility ¼ mile. VDP and Baro-VNAV NA when using Aurora altimeter setting. Circling Rwy 15, 28, 33 NA at night.

MISSED APPROACH: Climb to 2600 direct PEPRE and right turn on track 204° to JOT VOR/DME and hold.

ATIS <b>132.075</b>	CHICAGO APP CON <b>133.5 349.0</b>	DUPAGE TOWER <b>120.9 257.8</b>	GND CON <b>121.8</b>	CLNC DEL <b>119.75</b>
------------------------	---------------------------------------	------------------------------------	-------------------------	---------------------------



CATEGORY		A	B	C	D
LPV DA		956-3/4		200 (200-3/4)	
LNAV/VNAV DA		1244-13/4		488 (500-13/4)	
LNAV MDA		1180-1 424 (500-1)		1180-11/4 424 (500-11/4)	
CIRCLING		1260-1 501 (600-1)		1360-13/4 601 (700-13/4)	