

WAAS CH 86830 W02B	APP CRS 015°	Rwy Idg 7571 TDZE 754 Apt Elev 759
--	------------------------	---

RNAV (GPS) RWY 2L

DUPAGE (DPA)

⚠

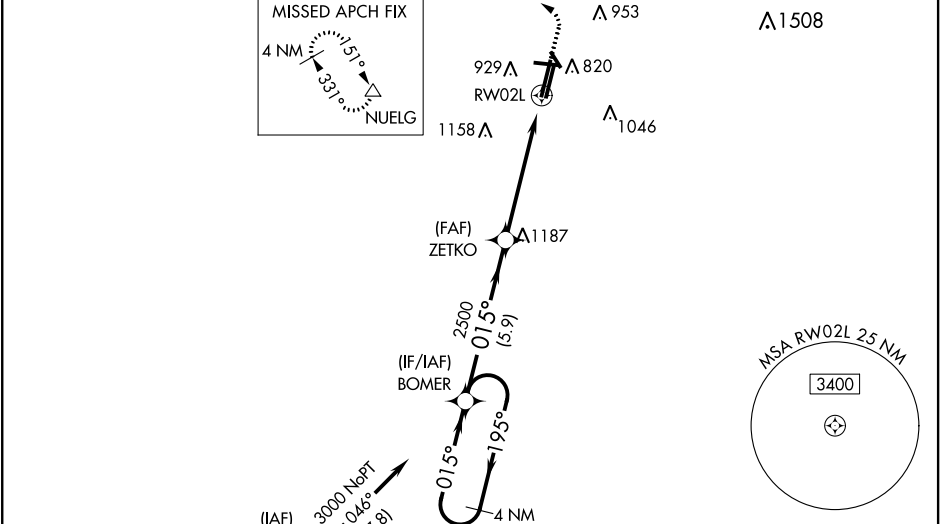
For uncompensated Baro-VNAV systems, LNAV/VNAV NA below -16°C (4°F) or above 54°C (130°F). DME/DME RNP-0.3 NA. When local altimeter setting not received, use Aurora altimeter setting and increase all DA 37 feet and all MDA 40 feet; increase LNAV/VNAV all Cats and LNAV Cat C/D visibility ½ mile. For inop MALS, increase LNAV/VNAV all Cats visibility to 1 ½ and LNAV Cat C/D visibility to 1 ½ mile. For inop MALS when using Aurora altimeter setting, increase LNAV/VNAV all Cats visibility to 1 ½ and LNAV Cat C/D visibility to 1 ½ mile. VDP and Baro-VNAV NA when using Aurora altimeter setting. Circling Rwy 15, 28, 33 NA at night.

MALS

MISSED APPROACH:

Climb to 1300 then climbing left turn to 3000 direct NUEL and hold.

ATIS 132.075	CHICAGO APP CON 133.5 349.0	DUPAGE TOWER 120.9 257.8	GND CON 121.8	CLNC DEL 119.75
------------------------	---------------------------------------	------------------------------------	-------------------------	---------------------------



ELEV 759 TDZE 754

MIRL Rwy 15-33 and 2R-20L
TDZ/CL Rwy 2L
RLS Rwy 10

4 NM Holding Pattern

BOMER

3000 ← 195° 015° →

GP 3.00° TCH 50

2500

ZETKO 2500

1300 3000 NUEL

* 1.4 NM to RW02L

* LNAV only

RW02L

5.9 NM 3.9 NM 1.4 NM

CATEGORY	A	B	C	D
LPV DA	954- ½		200 (200- ½)	
LNAV/VNAV DA	1114- ¾		360 (400- ¾)	
LNAV MDA	1260- ½ 506 (600- ½)		1260-1 506 (600-1)	
CIRCLING	1260-1 501 (600-1)		1360-1 ¾ 601 (700-1 ¾) 1360-2 601 (700-2)	

TWR 895

REIL Rwy 10, 15, 28 and 33
HIRL Rwy 10-28 and 2L-20R

015° to RW02L