

WAAS CH 58004 W21A	APP CRS 210°	Rwy Idg 6006 TDZE 697 Apt Elev 697
--	------------------------	---

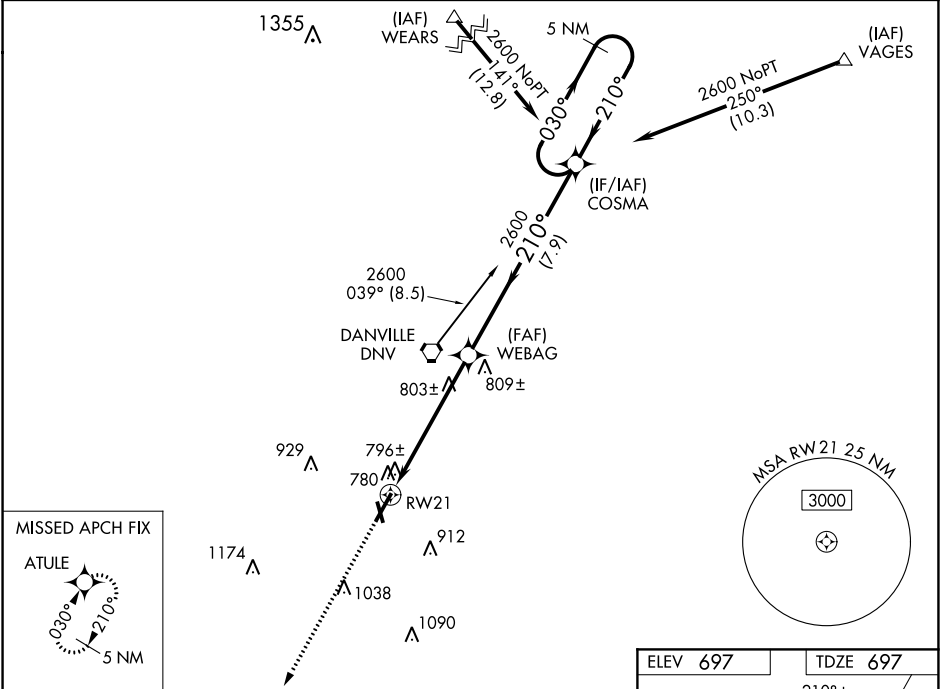
RNAV (GPS) RWY 21
VERMILION RGNL (DNV)

⚠ If local altimeter setting not received, use University of Illinois-Willard altimeter setting and increase all DAs/MDAs 100 feet. Baro-VNAV and VDP NA when using University of Illinois-Willard altimeter setting. For uncompensated Baro-VNAV systems, LNAV/VNAV NA below -16°C (4°F) or above 47°C (116°F). For inop MALSR, increase LPV all Cats visibility to 1 mile and LNAV Cat D visibility to 1¼ mile. DME/DME RNP-0.3 NA.

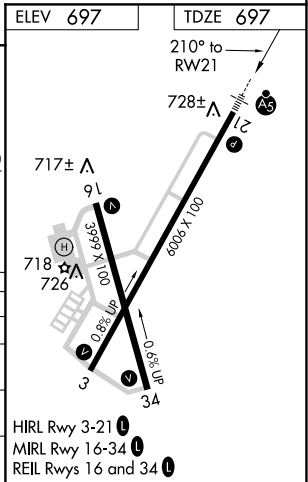
MALSR

MISSED APPROACH: Climb to 2300 direct ATULE and hold.

AWOS-3 119.275	CHAMPAIGN APP CON ★ 121.35 285.65	CLNC DEL 121.7	UNICOM 122.7 (CTAF) 0
--------------------------	---	--------------------------	---------------------------------



2300		ATULE	
↑		✦	
*LNAV only.			
RW21		1.1 NM to RW21	
1.1		4.7 NM	
B		7.9 NM	
C		D	
CATEGORY	A	B	C
LPV DA	990-½	293 (300-½)	
LNAV/VNAV DA	1069-¾	372 (400-¾)	
LNAV MDA	1080-½	383 (400-½)	1080-1
CIRCLING	1160-1	463 (500-1)	1160-1½
		463 (500-1½)	1260-2
			563 (600-2)



EC-3, 03 DEC 2020 to 31 DEC 2020

EC-3, 03 DEC 2020 to 31 DEC 2020