

WAAS CH 53516 W22A	APP CRS 219°	Rwy Idg TDZE 666 Apt Elev 674
--	------------------------	---

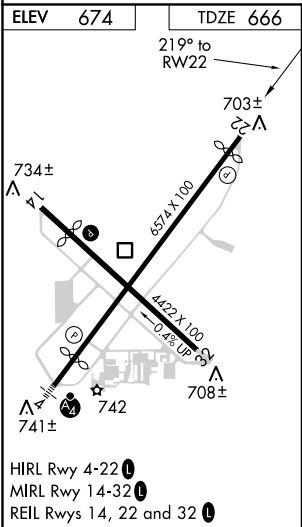
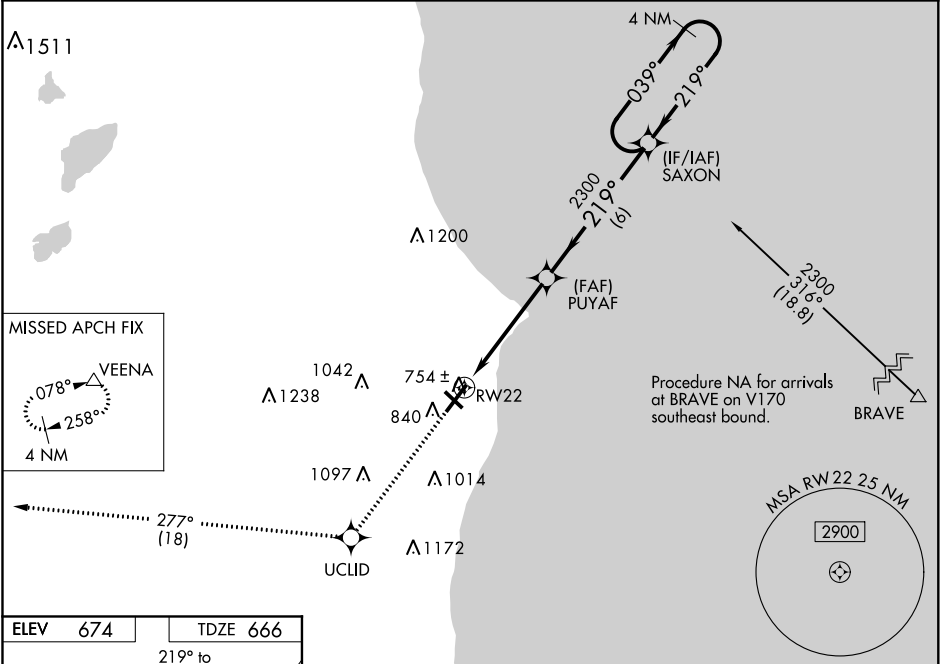
RNAV (GPS) RWY 22

BATTEN INTL (RAC)

⚠ For uncompensated Baro-VNAV systems, LNAV/VNAV NA below -19°C (-2°F) or above 54°C (130°F).
⚠ DME/DME RNP-0.3 NA. When local altimeter setting not received, use General Mitchell Intl altimeter setting: increase LPV DA to 984 and all visibilities $\frac{1}{8}$ SM; increase LNAV/VNAV DA to 1032 and all visibilities $\frac{1}{4}$ SM; increase all MDA 40 feet and LNAV Cat C and D visibility $\frac{1}{8}$ SM and Circling Cat C and D visibility $\frac{1}{4}$ SM. Circling Rwy 14 NA at night. Rwy 22 helicopter visibility reduction below $\frac{1}{4}$ SM NA. Baro-VNAV and VDP NA when using General Mitchell Intl altimeter setting.

MISSED APPROACH:
Climb to 3000 direct
UCLID and track 277°
to VEENA and hold.

ASOS 121.425	MILWAUKEE APP CON 135.875 317.725	CLNC DEL 120.15	UNICOM 123.075 (CTAF) 0
------------------------	---	---------------------------	-----------------------------------



3000	UCLID	tr 277°	VEENA	VGSI and RNAV glidepath not coincident (VGSI Angle 3.00/TCH 46).
				PUYAF, Saxon, Holding Pattern, 4 NM.
*LNAV only.				
		*1 NM to RW22	2300	219°, 039°, 2300, GP 3.00° TCH 55.
		1 NM	3.9 NM	6 NM
CATEGORY	A	B	C	D
LPV DA	949- $\frac{7}{8}$		283 (300- $\frac{7}{8}$)	
LNAV/VNAV DA	997-1		331 (400-1)	
LNAV MDA	1020-1		354 (400-1)	
CIRCLING	1140-1 466 (500-1)	1160-1 486 (500-1)	1380-2 706 (800-2)	1380-2 $\frac{1}{4}$ 706 (800-2 $\frac{1}{4}$)