

APP CRS	Rwy Idg	4422
315°	TDZE	667
	Apt Elev	674

RNAV (GPS) RWY 32

BATTEN INTL (RAC)

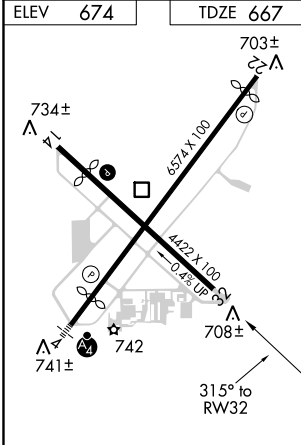
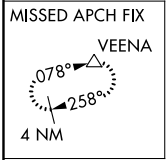
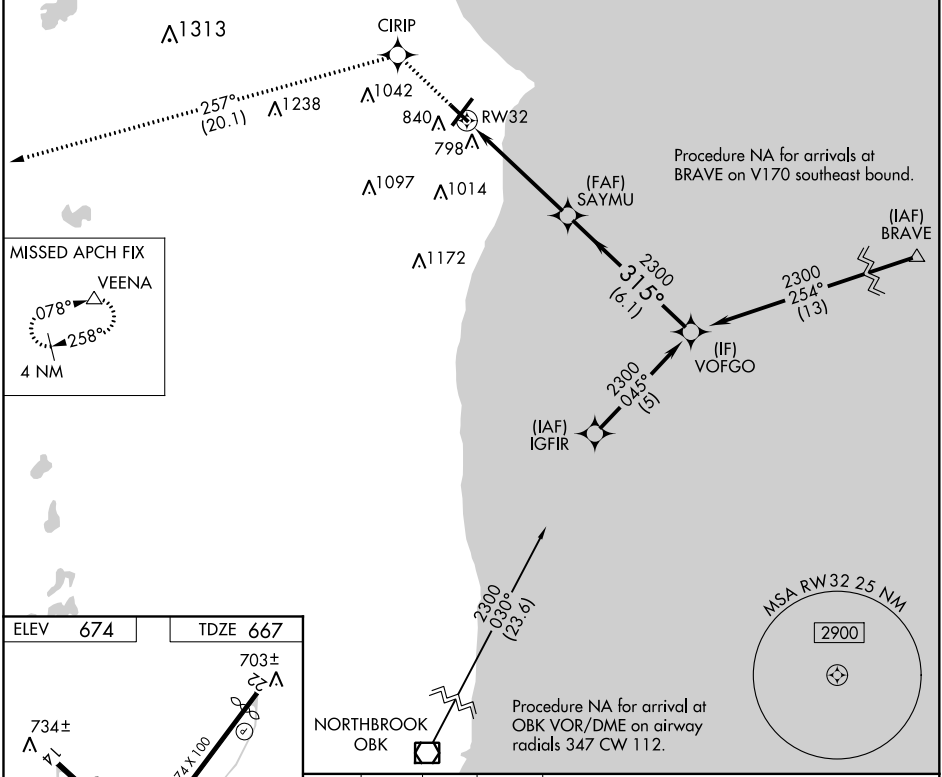
▼

▲

DME/DME RNP-0.3 NA. VDP NA when using General Mitchell Intl altimeter setting.  
When local altimeter setting not received, use General Mitchell Intl altimeter setting:  
Increase all MDA 40 feet and visibility Cat C and D ¼ SM. Rwy 32 helicopter  
visibility reduction below ¾ SM NA. Circling Rwy 14 NA at night.

MISSED APPROACH:  
Climb to 3000 direct  
CIRIP and track 257°  
to VEENA and hold.

ASOS	MILWAUKEE APP CON	CLNC DEL	UNICOM
121.425	135.875 317.725	120.15	123.075 (CTAF) 0



HIRL Rwy 4-22 0  
MIRL Rwy 14-32 0  
REIL Rwy 14, 22 and 32 0

3000	CIRIP	tr 257°	VEENA	SAYMU	VOFGO
				1.1 NM to RW32	
				1.1 NM	3.9 NM
				6.1 NM	
CATEGORY	A	B	C	D	
LNAV MDA	1060-1	393 (400-1)	1060-1½	393 (400-1½)	
CIRCLING	1140-1 466 (500-1)	1160-1 486 (500-1)	1380-2 706 (800-2)	1380-2¼ 706 (800-2¼)	