

WAAS CH <b>97516</b> <b>W04A</b>	APP CRS <b>039°</b>	Rwy Idg <b>5840</b> TDZE <b>668</b> Apt Elev <b>674</b>
--	------------------------	---

RNAV (GPS) RWY 4

BATTEN INTL (RAC)

▼

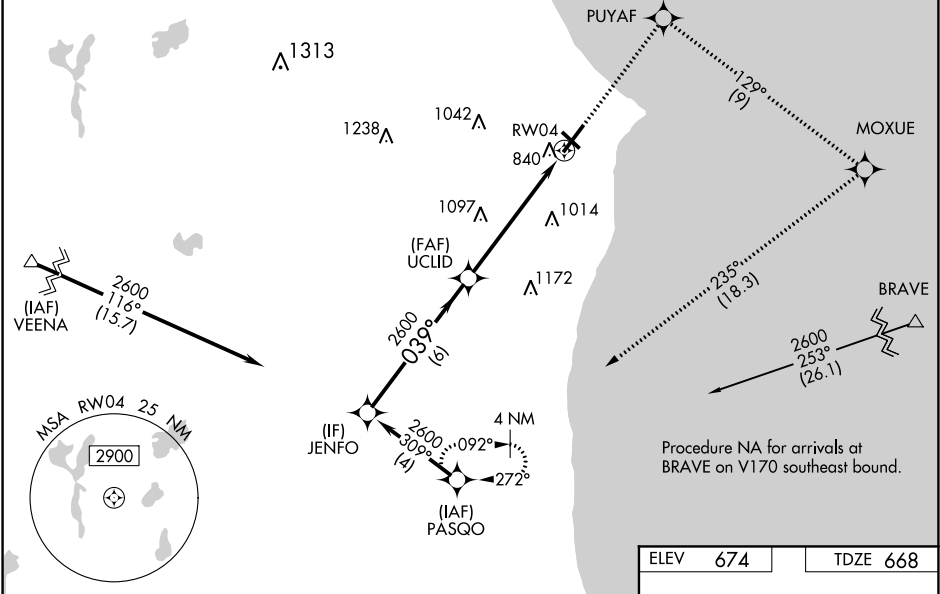
▲

Baro-VNAV NA when using General Mitchell Intl altimeter setting. For uncompensated Baro-VNAV systems, LNAV/VNAV NA below -20°C (-4°F) or above 54°C (130°F). DME/DME RNP-0.3 NA. VDP NA when using General Mitchell Intl altimeter setting. When local altimeter setting not received, use General Mitchell Intl altimeter setting: increase LPV DA to 1023 and all visibilities ½ SM; increase LNAV/VNAV DA to 1135 and all visibilities ½ SM; increase all MDA 40 feet and visibility Cat C and D ¼ SM. Circling Rwy 14 NA at night. Rwy 4 helicopter visibility reduction below ¾ SM NA. Inop table does not apply.

MALSF

MISSED APPROACH: Climb to 2600 direct PUYAF and right turn on track 129° to MOXUE and right turn on track 235° to PASQO and hold.

ASOS <b>121.425</b>	MILWAUKEE APP CON <b>135.875 317.725</b>	CLNC DEL <b>120.15</b>	UNICOM <b>123.075 (CTAF) 1</b>
------------------------	---	---------------------------	-----------------------------------



2600

PUYAF

MOXUE

PASQO

↑

tr 129°

tr 235°

JENFO

UCLID

RW04

GP 3.00°

TCH 45

6 NM

4.4 NM

1.5 NM

\*LNAV only.

\*1.5 NM to RW04

CATEGORY	A	B	C	D
LPV DA	988-1		320 (400-1)	
LNAV/VNAV DA	1100-1½		432 (500-1½)	
LNAV MDA	1180-1	512 (600-1)	1180-1¾	512 (600-1¾)
CIRCLING	1180-1	506 (600-1)	1380-2 706 (800-2)	1380-2¼ 706 (800-2¼)

734±

742

741±

703±

708±

6574 X 100

4422 X 100

0.45 UP 65

039° to RW04

HIRL Rwy 4-22

MIRL Rwy 14-32

REIL Rws 14, 22 and 32