

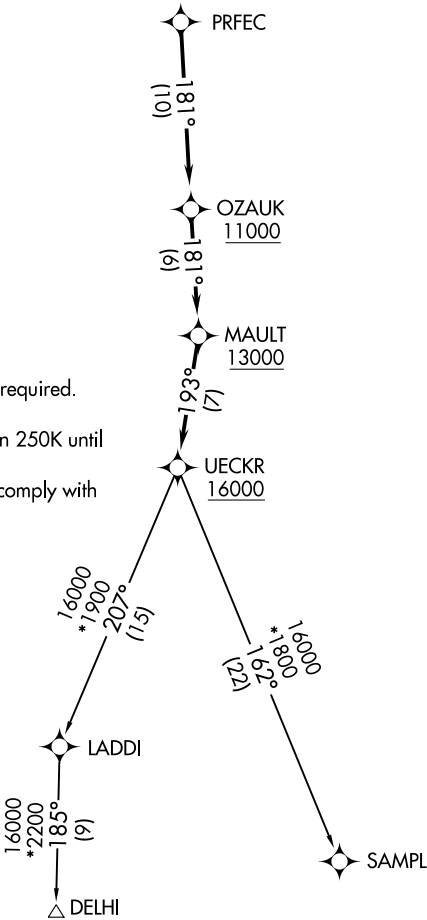
ASOS  
121.425  
CLNC DEL  
120.15  
MILWAUKEE DEP CON  
135.875 317.725



TOP ALTITUDE:  
ASSIGNED BY ATC

TAKEOFF MINIMUMS  
Rwys 4, 14, 22, 32: Standard.

- NOTE: RNAV 1.  
NOTE: GPS or DME/DME/IRU required.  
NOTE: RADAR required.  
NOTE: Turbojet aircraft maintain 250K until advised by ATC.  
NOTE: Notify ATC if unable to comply with crossing restrictions.



NOTE: Chart not to scale.

DEPARTURE ROUTE DESCRIPTION

Climb on assigned heading for RADAR vectors to PRFEC, thence....

....on track 181° to cross OZAUZ at or above 11000, then on track 181° to cross MAULT at or above 13000, then on track 193° to cross UECKR at or above 16000, then on (transition). Maintain ATC assigned altitude, expect filed altitude ten minutes after departure.

DELHI TRANSITION (UECKR6.DELHI)  
SAMPL TRANSITION (UECKR6.SAMPL)

EC-3, 03 DEC 2020 to 31 DEC 2020

EC-3, 03 DEC 2020 to 31 DEC 2020