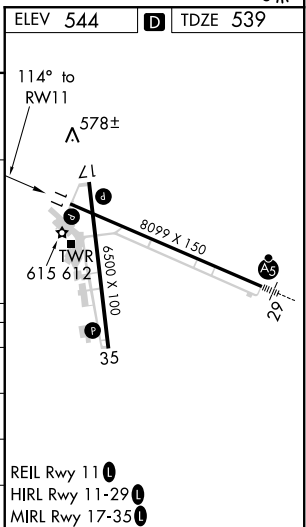
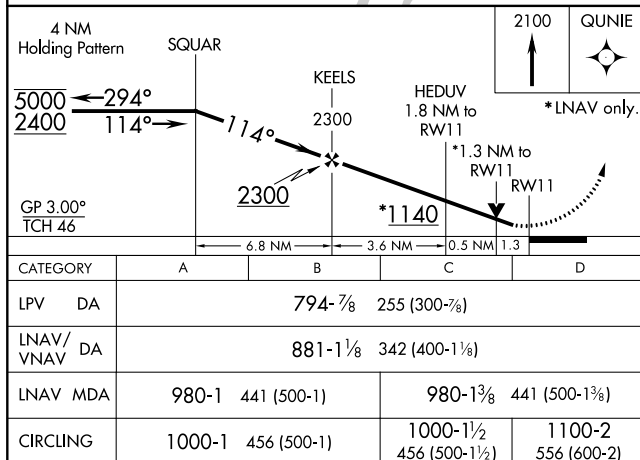
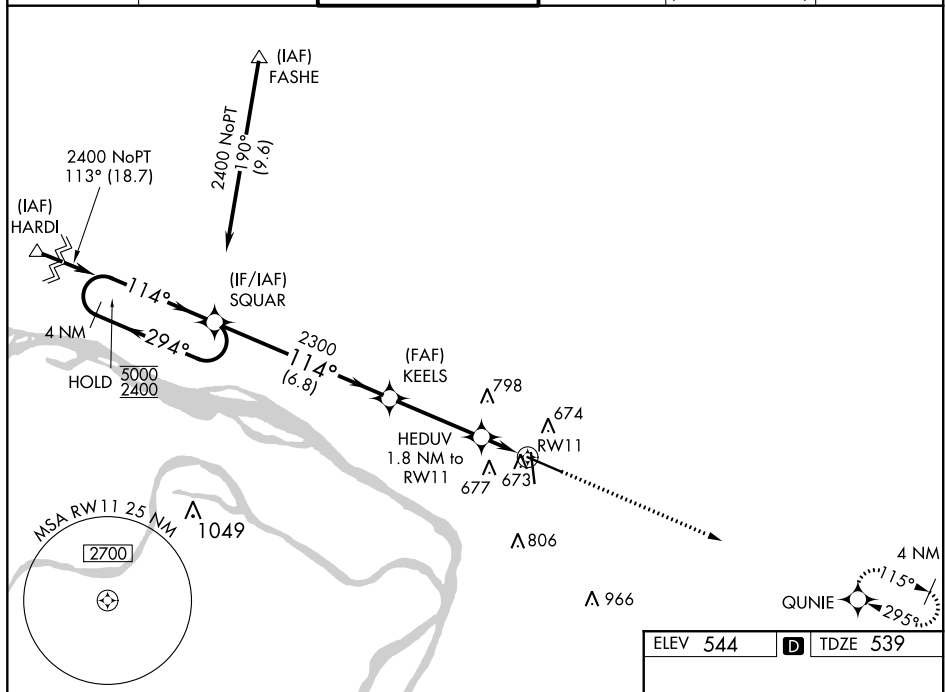


RNAV (GPS) RWY 11  
ST LOUIS RGNL (ALN)

**T** Rwy 11 helicopter visibility reduction below  $\frac{3}{4}$  SM NA.  
For uncompensated Baro-VNAV systems, LNAV/VNAV NA below -16°C or above 54°C.

**MISSED APPROACH:**  
Climb to 2100 direct  
QUNIE and hold.

ATIS <b>128.0</b>	ST LOUIS APP CON <b>124.2 353.9</b>	REGIONAL TOWER* <b>126.0 (CTAF) 0 239.0</b>	GND CON <b>120.2</b>	CLNC DEL <b>120.2</b> (when tower closed)	UNICOM <b>122.95</b>
----------------------	--	--	-------------------------	---	-------------------------



EC-3, 03 DEC 2020 to 31 DEC 2020