

VORTAC TOY  
**116.0**  
Chan 107

APP CRS  
**142°**

Rwy Idg  
TDZE  
Apt Elev  
**N/A**  
**N/A**  
**545**

VOR-A

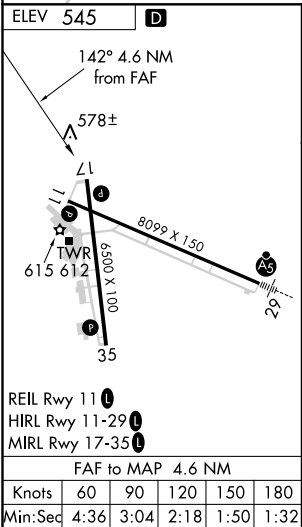
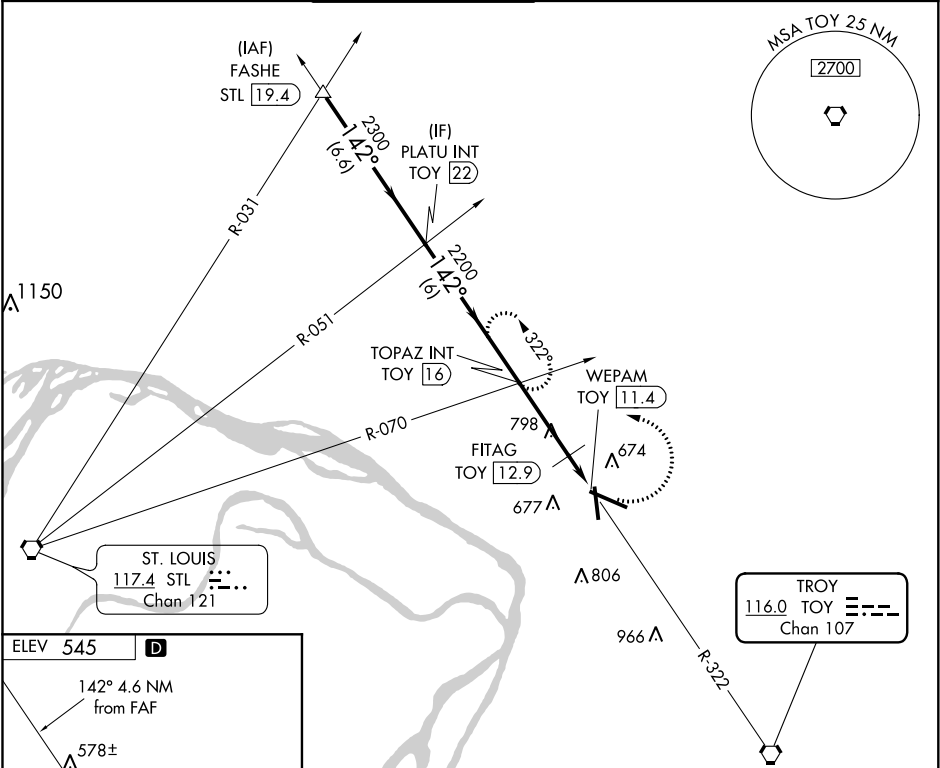
ST LOUIS RGNL (ALN)

⚠

When local altimeter setting not received, use St Louis Lambert Intl altimeter setting and increase all MDA 60 feet. When VGSI inop, Circling to Rwy 17/35 NA at night.

MISSED APPROACH: Climbing left turn to 2200 via TOY R-322 to TOPAZ INT/TOY 16 DME and hold.

ATIS <b>128.0</b>	ST LOUIS APP CON <b>124.2 353.9</b>	REGIONAL TOWER★ <b>126.0 (CTAF) 0 239.0</b>	GND CON <b>120.2</b>	CLNC DEL <b>120.2</b> (when tower closed)	UNICOM <b>122.95</b>
----------------------	--	--	-------------------------	---	-------------------------



FASHE STL 19.4		*1160 when using St Louis Lambert Intl altimeter setting.		2200	TOPAZ INT
2700		PLATU INT TOY 22	TOPAZ INT TOY 16	FITAG TOY 12.9	WEPAM TOY 11.4
2300		2200 *			
6.6 NM		6 NM		3.2 NM	
1.4 NM					
CATEGORY	A	B	C	D	
CIRCLING	1100-1	555 (600-1)	1100-1½ 555 (600-½)	1100-2 555 (600-2)	
FITAG FIX MINIMUMS					
CIRCLING	980-1 435 (500-1)	1000-1 455 (500-1)	1000-1½ 455 (500-½)	1100-2 555 (600-2)	