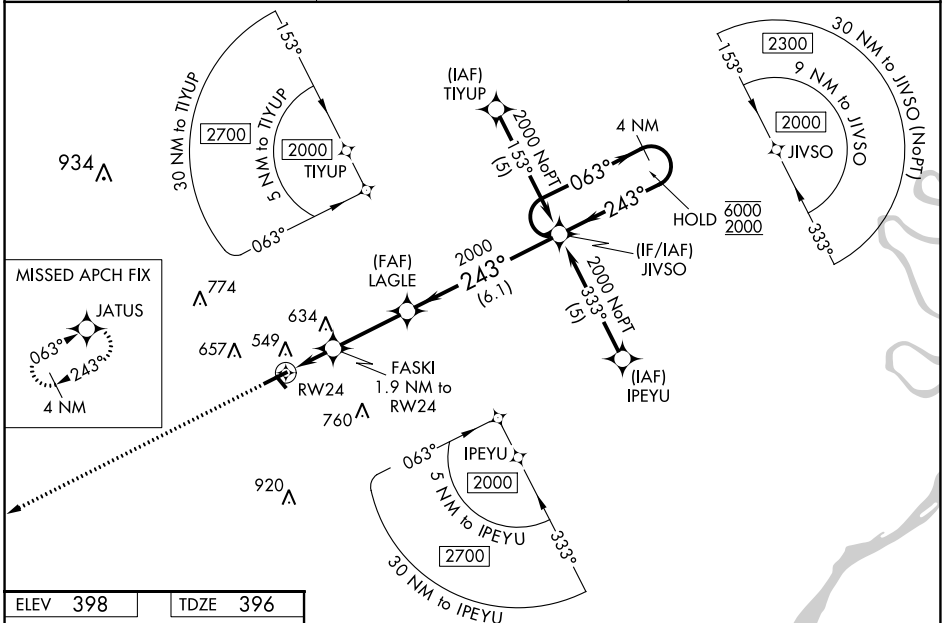


RNAV (GPS) RWY 24

T For uncompensated Baro-VNAV systems, LNAV/VNAV NA below -15°C or above 54°C.
Rwy 24 helicopter visibility reduction below $\frac{3}{4}$ SM NA.

MISSED APPROACH:
Climb to 2700 direct
JATUS and hold.

UNICOM
122.8 (CTAF) **L**

The diagram illustrates the RW24 arrival procedure. Key features include:

- JATUS**: Initial approach fix.
- FASKI**: Fix located 1.9 NM from RW24.
- LAGE**: Fix located 2000 feet above FASKI.
- RW24**: Runway threshold.
- *1020**: A critical altitude or speed restriction point.
- Distances and Angles**:
 - From JATUS to FASKI: 1.9 NM.
 - From FASKI to LAGE: 1.4 NM.
 - From LAGE to RW24: 3 NM.
 - From LAGE to GP 3.00° TCH 35: 6.1 NM.
 - Angle from JATUS to FASKI: 243°.
 - Angle from FASKI to LAGE: 243°.
 - Angle from LAGE to RW24: 270°.
 - Angle from LAGE to GP 3.00° TCH 35: 063°.
- GP 3.00° TCH 35**: Ground Proximity Path with 35-foot terrain clearance.

CATEGORY	A	B	C	D
LPV DA		697-1	301 (300-1)	
RNAV/VNAV DA		859-1 $\frac{3}{4}$	463 (500-1 $\frac{3}{4}$)	
RNAV MDA	880-1	484 (500-1)	880-1 $\frac{1}{4}$ 484 (500-1 $\frac{1}{4}$)	880-1 $\frac{1}{2}$ 484 (500-1 $\frac{1}{2}$)
CIRCLING	880-1 482 (500-1)	1020-1 622 (700-1)	1020-1 $\frac{3}{4}$ 622 (700-1 $\frac{3}{4}$)	1020-2 622 (700-2)

REIL Rwy's 6 and 24
MIRL Rwy's 6-24 and 14-32