

WAAS CH <b>63119</b> <b>W06A</b>	APP CRS <b>063°</b>	Rwy Idg TDZE Apt Elev	<b>5013</b> <b>394</b> <b>398</b>
--	------------------------	-----------------------------	---

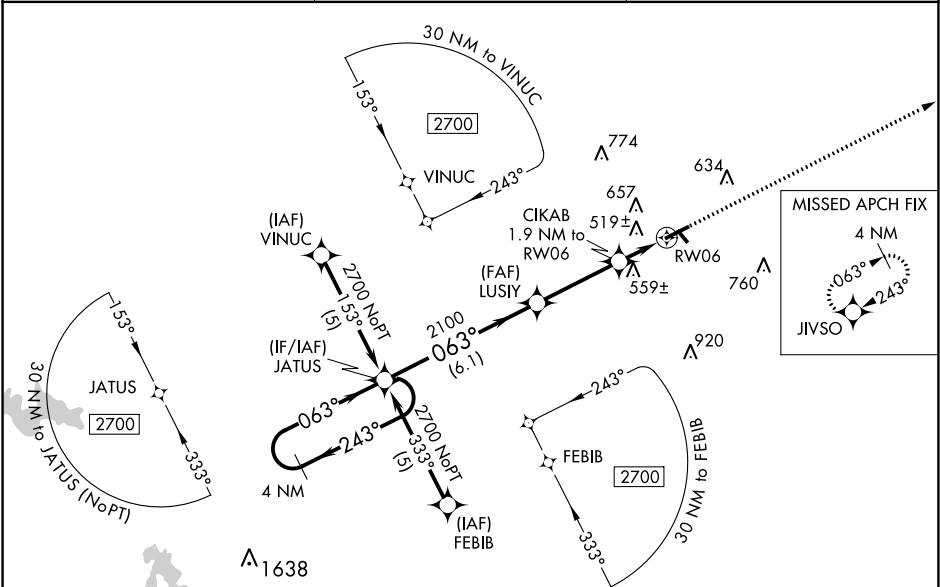
RNAV (GPS) RWY 6

HARRISBURG-RALEIGH (HSB)

**⚠** Baro-VNAV NA when using Williamson County Rgnl altimeter setting. For uncompensated Baro-VNAV systems, LNAV/VNAV NA below -15°C (5°F) or above 48°C (118°F). DME/DME RNP-0.3 NA. Visibility reduction by helicopters NA. When local altimeter setting not received, use Williamson County Rgnl altimeter setting and increase all DA 62 feet and all MDA 80 feet; increase LPV all Cats, LNAV/VNAV all Cats, LNAV Cats C and D and Circling Cats C and D visibility ¼ mile. VDP NA with Williamson County Rgnl altimeter setting.

MISSED APPROACH:  
Climb to 2000 direct JIVSO and hold.

AWOS-3 <b>135.925</b>	KANSAS CITY CENTER <b>127.475 346.275</b>	UNICOM <b>122.8 (CTAF) 0</b>
--------------------------	--	---------------------------------



4 NM Holding Pattern JATUS

2700

243°

063°

GP 3.00° TCH 35°

2100

063°

2100

063°

2700

063°

2700

063°

6.1 NM

3.3 NM

0.6 NM

1.3 NM

ELEV 398

TDZE 394

2000 JIVSO

\*LNAV only

509±

2704 X 75

5013 X 75

063° to RW06

CATEGORY	A	B	C	D
LPV DA	682-1		288 (300-1)	
LNAV/VNAV DA	958-2		564 (600-2)	
LNAV MDA	820-1 426 (500-1)		820-1¼ 426 (500-1¼)	
CIRCLING	880-1 482 (500-1)	1020-1 622 (700-1)	1020-1¾ 622 (700-1¾)	1020-2 622 (700-2)

REIL Rwy 6 and 24 0

MIRL Rwy 6-24 and 14-32 0