

VOR/DME GBG
109.8
Chan **35**

APP CRS
211°

Rwy Idg
TDZE **764**
Apt Elev **764**

5792

764

764

VOR RWY 21

GALESBURG MUNI (GBG)

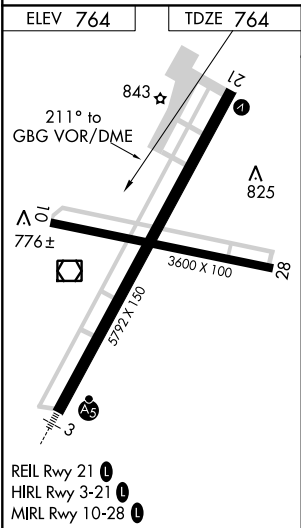
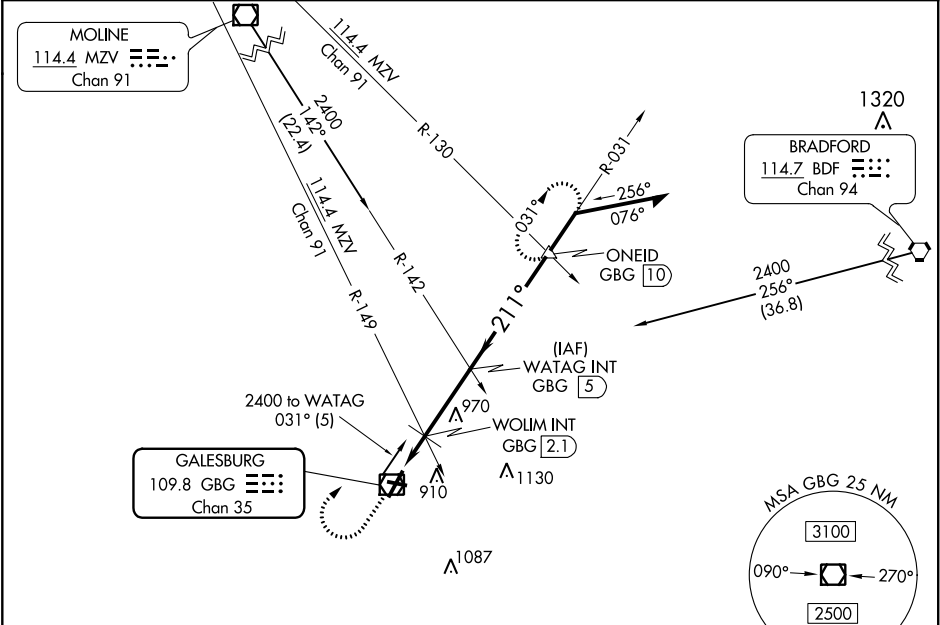
⚠

NA

Circling Rwy 10 NA at night. When local altimeter setting not received, use Macomb altimeter setting and increase all MDA 80 feet, increase S-21 Cats C/D and Circling Cat C visibility to 1 1/2 SM, increase WOLIM fix minimums S-21 Cats C/D visibility to 1 1/2 SM.

MISSED APPROACH: Climb to 2000 then climbing right turn to 3000 on GBG VOR/DME R-031 to ONEID INT/GBG 10 DME and hold.

AWOS-3 118.975	QUAD CITY APP CON ★ 133.275 257.8	CLNC DEL 120.7	UNICOM 123.0 (CTAF) 0
--------------------------	---	--------------------------	--



2000	3000	GBG R-031	ONEID	VGSI and descent angles not coincident (VGSI Angle 3.00/TCH 55).
↑	↷		△	
WATAG INT GBG 5				Remain within 10 NM
WOLIM INT GBG 2.1				
GBG VOR/DME				
3.37° TCH 55				
*1340				
1.5 NM				2.9 NM
CATEGORY	A	B	C	D
S-21	1340-1 576 (600-1)		1340-1 5/8 576 (600-1 1/8)	
CIRCLING	1340-1 576 (600-1)		1340-1 5/8 576 (600-1 1/8)	1340-2 576 (600-2)
WOLIM FIX MINIMUMS (DUAL VOR RECEIVERS OR DME REQUIRED)				
S-21	1220-1 456 (500-1)		1220-1 3/8 456 (500-1 1/8)	
CIRCLING	1220-1 456 (500-1)		1220-1 1/2 456 (500-1 1/2)	1340-2 576 (600-2)