

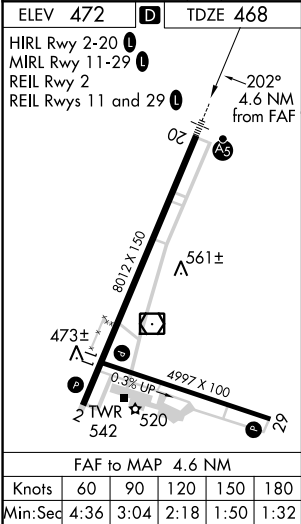
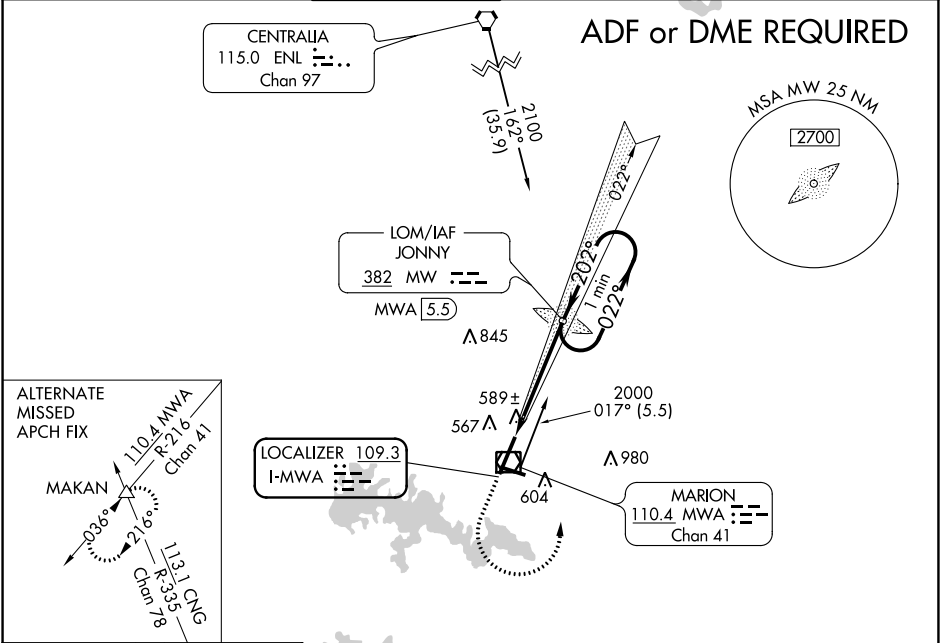
LOC I-MWA 109.3	APP CRS 202°	Rwy Idg 8012 TDZE 468 Apt Elev 472
---------------------------	------------------------	---


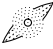
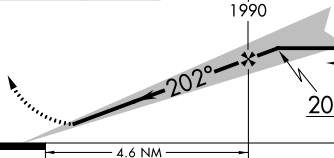
ILS or LOC RWY 20

VETERANS AIRPORT OF SOUTHERN ILLINOIS(MWA)

<p>ADF required. If local altimeter setting not received, use Carbondale-Murphysboro altimeter setting and increase all DA/MDAs 40 feet. Circling Rwy 11 NA at night.</p>	<p>MALSR</p>	<p>MISSED APPROACH: Climb to 1500 then climbing left turn to 2000 direct JONNY LOM/MWA 5.5 DME and hold.</p>
---	--------------	--

AWOS-3 119.675	KANSAS CITY CENTER 127.475 346.275	MARION TOWER★ 128.4 (CTAF) 0	KANSAS CITY CLNC DEL 127.475 (when tower closed)	GND CON 121.7	UNICOM 122.95
--------------------------	--	--	--	-------------------------	-------------------------



<div><div><div>△</div><div>MAKAN</div></div><div><div>△</div><div>1638</div></div></div>				
<div><div><div>1500</div><div>↑</div></div><div><div>2000</div><div></div></div><div><div>MW</div><div></div></div></div> <div><div><div>MW LOM</div><div>MWA 5.5</div></div><div><div>1990</div><div></div><div><div>One Minute Holding Pattern</div><div><div>022°</div><div>2000</div><div>202°</div><div>2000</div></div><div><div>GS 3.00°</div><div>TCH 50</div></div></div></div></div>				
CATEGORY	A	B	C	D
S-ILS 20	668- ½ 200 (200-½)			
S-LOC 20	840- ½ 372 (400-½)			840-¾ 372 (400-¾)
CIRCLING	920-1 448 (500-1)	940-1 468 (500-1)	940-1½ 468 (500-1½)	1040-2 568 (600-2)